

Fact Finders Report Received in Teacher Contract Dispute

The fact finder's report has been returned to the negotiators in the teacher-school board dispute. It offers concessions to both sides. But whether it will be accepted by the Chelsea and the Chelsea Board of Education remains to be seen.

The Executive Council of the CEA is meeting today (Thursday) on the matter. The Board of Education will consider the fact finder's recommendations Monday night, at a regular meeting.

The 28-page manuscript, the work of John B. Coyle, appointed by the Michigan Employment Relations Commission, arrived last week-end. It is the fruit of four day-long sessions initiated Sept. 15, on a request by the OEA. The fact finder had a month to prepare his recommendations.

Coyle's report offers findings and recommendations of the seven issues left unresolved after the teacher-board negotiations for a 1972-73 contract broke down. The old contract expired Aug. 31, 1972.

In each instance, the fact finder addresses himself to changes suggested by the CEA, and counter proposals offered by the board.

The first concerns the CEA's wish to limit the number of students in certain classes. The limit should be determined by the seating and equipment capacity of the room. The CEA argued that facilities should not be overtaxed, as it lessens the quality of education.

In response to this proposal, the Board took the position that the space, accommodations, equipment and supplies furnished to students are not subjects over which it is legally obliged to bargain with a teacher association.

Therefore, the board considered the proposal non-negotiable.

Boyle commends the teachers' concern in this area, but suggests that "the teacher Association be satisfied with being on record at the present time, and for the future, with having its protest a matter of record."

"In the interest of a new contract without a strike," Boyle recommends CEA withdraw this demand from their negotiations this year. With this, he acknowledges the school district's responsibility to provide adequate equipment and facilities.

Another issue was the CEA's proposal that teachers returning from maternity leave be reinstated to the position held before such leave. The 1971-72 contract provides that "upon the expiration of the leave period granted, the teacher shall be entitled to return to the first job vacancy available for which she is qualified."

The board objected to the guarantee that the specific teaching assignment would be offered. They wished to offer "the first job vacancy available for which she is qualified."

The fact finder found a compromise to this problem by eliminating the distinction between teachers returning from medical leave and those returning from maternity leave. Thus, he recommends that teachers be reinstated to work "within their certification."

The third issue concerns another kind of leave. The CEA, arguing that teaching puts one under considerable strain, asked for a year's leave for "personal business," after seven years of service with the school district. They stipulated that the leave be given automatically upon request "to prevent the use of this clause to discriminate in favor of certain people and against others." Furthermore, they wanted teachers returning from

this sabbatical "reinstated in the former position or one of like nature and status."

The board was not unresponsive to this request, yet it balked at the mandatory aspect. The fact finder agreed that the board should be allowed the "discretion they require to discharge their responsibilities." He recommends the leave be given, "provided the granting of such leave will not be contrary to the best interests of the school district."

The CEA's fourth proposal was that teachers be notified when they are in danger of losing their jobs because of deficiencies that may be noted on an evaluation. The Board felt a clause to this effect would be superfluous since teachers are already protected by grievance procedures and the teacher evaluation and tenure acts.

Nevertheless, Coyle felt the request was understandable and

reasonable. He recommends that the proposal be accepted as submitted.

CEA's fifth proposal suggested that salaries for summer work in 1972 be paid on the basis of the 1972-73 contract. They support this request with precedents set in the last two contracts.

In this case, the fact finder agrees with the Board that neither the subject of salary payment for summer 1972, nor a retroactive date of July 1, 1972, are appropriate subjects for bargaining since the previous contract did not terminate until Aug. 31, 1972.

The sixth issue, one of the most complex, involved the financing of hospital and medical benefits for teachers. At the present time, these are financed on a contributory basis; the employee pays a share of the premium cost, as does the employer.

The CEA proposed that the Board pay the entire premium. Other CEA concerns focused on the insurance companies involved, the amount of coverage, and coverage after the termination of a teacher's contract.

The fact finder concludes that the board should assume the full premium cost of group insurance for the full family. This should start on the first month following the month in which the new contract is ratified.

The final issue, which required two separate days of discussion during the fact findings, concerns the salary scale for teachers.

Coyle discovered that the District could meet the salary objectives outlined in the CEA's proposal. "However, the question here," says Coyle, "is not only whether it can but also whether it should. It also involved questions of a reasonable

competitive alignment with other districts in the area.

Considering a myriad of factors, Coyle recommends a new salary structure based upon a 5.3 percent increase in the previous schedules, made retroactive to Aug. 31. He suggests another schedule be added, for teachers with higher degrees or special training.

In addition to those seven recommendations, the fact finder made one additional recommendation. He suggests the contract run from Aug. 31, 1972 to June 30, 1973. "This will avoid any future controversy over retroactivity," says Coyle. "And also allow parties to complete negotiations prior to the commencement of the next school year."

Assuming the CEA and the school board accept Coyle's compromises, a new contract could be signed within a month. That would leave four months' time to bang out next year's contract.

WEATHER

	Min.	Max.	Precip.
Wednesday, Jan. 3	33	42	Trace
Thursday, Jan. 4	25	44	0.01
Friday, Jan. 5	14	26	Trace
Saturday, Jan. 6	23	31	0.00
Sunday, Jan. 7	24	33	0.00
Monday, Jan. 8	15	23	Trace
Tuesday, Jan. 9	12	22	0.01

By H.K.L.

The Chelsea Standard

ONE HUNDRED-THIRD YEAR—No. 30

12 Pages This Week

CHELSEA, MICHIGAN, THURSDAY, JANUARY 11, 1973

15c per copy

SUBSCRIPTION: \$4.00 PER YEAR

Drug Seminar Scheduled at St. Paul Church

Of all the crises that confront the church, frighten parents, and perplex young people, drug abuse ranks among the highest. As a result, drug education attempts are as common as the use of drugs themselves.

Beginning this Sunday, Jan. 14, St. Paul United Church of Christ will be hosting a drug seminar, for six consecutive Sundays, which offers a different approach to the problem.

This seminar attempts to offer an alternative traditional drug education in that it does not deal with symptomatology, but goes to the heart of the problem: the culture which teaches all of us to use drugs as a means of coping with stress.

The seminar will focus primarily on attitudes and feelings of parents and young people toward drug use and abuse today. The related problems that exist in common between parent and young people will also be considered with the drug problem.

The Participants in the seminar will be asked to examine their own attitudes and values, and take an honest look at how they fit into the drug problem today.

Enrollment is limited. Those interested may be accepted by calling St. Paul church.

Three experts on the drug problem are behind the seminar. One, Philip Hassen, MPH, is drug coordinator for planning and programming in the Washtenaw County Community Mental Health Center. He co-ordinates all drug programs in the county. He has been with the Mental Health Center since October, 1971, and has provided numerous educational opportunities in the areas of drug abuse.

Another is Matthew Lampe, an associate drug co-ordinator of the Washtenaw County Community Mental Health Center, who focuses primarily on drug education and drug related crisis intervention. Lampe is one of the original founders of Drug Help in Ann Arbor and has been very influential in directing drug education programs in the county, the state and nationally.

The third member of the team is Timothy H. Lentner, STM, MSW, a psychiatric social worker with the center. He has been actively engaged in consultation and educational programs with clergy and individual parishes since June of 1971. He is also a clergyman affiliated with the American Lutheran Church.

Parents with young children or adults with no children should not assume that this seminar will not be of value to them.

High School Girl Faces Drug Charge

A 16-year-old Chelsea High school student has been petitioned to Juvenile Court on charges of being a disorderly person. She appeared in a public place, Jan. 3, allegedly under the influence of narcotics.

Chelsea Police reports state that the girl was first observed acting peculiarly when she asked to be excused from a study hall at the high school. The teacher reportedly became alarmed when he noticed she was staggering. He said her eyes appeared glazed.

He notified Charles Lane, Chelsea High school principal, who immediately called the police and the girl's parents.

When the mother joined the girl and the authorities at the police station, she refused to sign a waiver allowing Chief George Morawick to question the girl. The mother, herself, proceeded to question her daughter, who then, according to the police, admitted to using drugs.

Bulldog Cagers Come to Life With 2 Wins

"We've begun to play better together," was Coach Chuck Kelly's explanation for Chelsea's fine showing on the hardwoods last week-end. The cagers broke out of three weeks of official inactivity to tally up two wins in two games. They displayed the polish acquired from many hours of Christmas time practice.

"We were rusty before," says the Coach, "but now we're doing some good team work."

Friday, the Bulldogs faced Dundee, keepers of the basement position in the Southeastern Conference. During the first half, it appeared as if Chelsea were headed down to their level.

Chelsea moved out slowly, allowing Dundee to move ahead, 7-6, in the first quarter. Dundee's lead expanded in the second (Continued on page three)

State Okays Bond Sale for Sewer System

Attorney General Frank J. Kelley, chairman of the Municipal Finance Commission, has announced that the Commission approved \$500,000 of "General Obligation Sanitary Sewer System Bonds" for the Village of Chelsea.

Attorney General Kelley said, "The proceeds will be used to defray the cost of acquiring and constructing improvements and extensions to the sanitary sewer system for the Village of Chelsea. These bonds are payable from ad valorem taxes which may be levied without limitation as to rate or amount."

Other members of the Municipal Finance Commission are Allison Green, state treasurer; and John W. Porter, superintendent of public instruction.

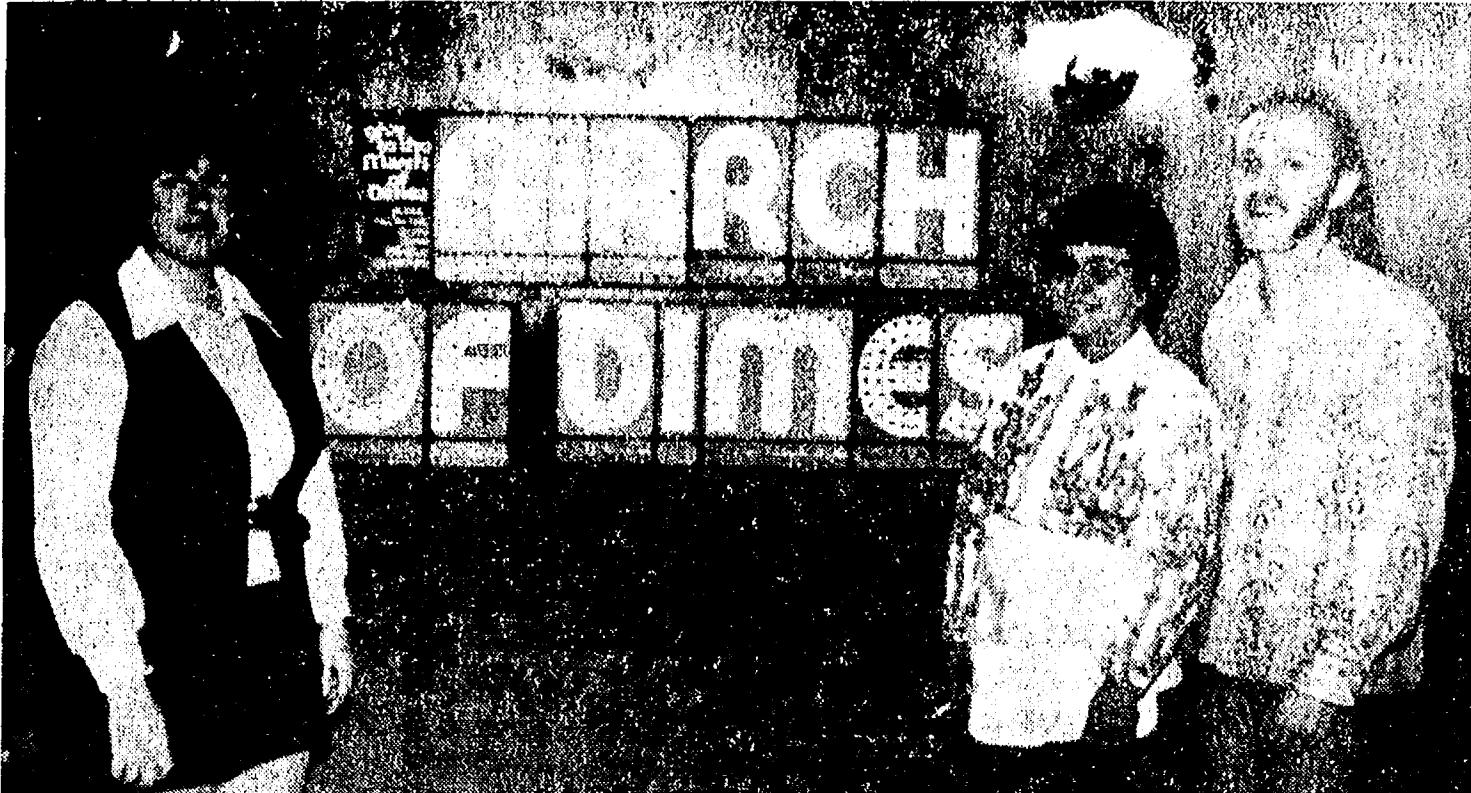
The following fees are to be paid from the bond proceeds: local attorney, \$1,746; bond attorney, \$1,825.

No Court Sessions

No 14th District Court cases were held in Chelsea this week because the judge was called away on business.



MARCHING ALONG: With speed and consistent generosity, patrons and management of the Wolverine Bar have filled two Dime Boards in the first week of the March of Dimes campaign. "Two boards in two days," exclaimed Mrs. Charles Bongo, chairman of the drive. "That's great!" With the board, worth \$49.20, are Alice Dryer (left), June Barry (center) and Joe Merkel, Wolverine Bar owner.



THE PUB displayed its silvery contribution to the March of Dimes shortly after it was filled Friday. The new dime board, which replaced this one, has since been filled, too. In both cases, the Pub reported the feat only moments after the Wolverine had claimed the distinction of being the first. With the sign are Ree Kanitz (left), Jean Canine (center) and Larry Sapron.

March of Dimes Campaign Jumps Off to Fast Start Here

"I think we've got a competition going," said Mrs. Charles Bongo, Chelsea's chairman of the 1973 March of Dimes. She is delighted. Although the Wolverine Bar was the first to fill its March of Dimes Board, Friday, the Pub was not too far behind. The boards were replaced Saturday, and by Monday the Wolverine's was full for a second time. Again, the Pub was not far behind.

"Why, that's four times \$49.20," Mrs. Bongo said, counting it up as she went along. "And we've just begun!"

These early signs of success have not made Chelsea's volunteers apathetic. Despite the flu and other family illnesses, they have moved worlds, and plan to move more.

At the official March of Dimes kickoff dinner, held at the Moose Lodge in Ann Arbor, Monday night, Mrs. Ray Canine and Mrs. Bongo received last-minute briefing on the campaign ahead.

They were also treated to a "very enlightening" speech by Dr. Roy Schmickel, Associate Professor of Pediatrics, Communicable Diseases, and Human Genetics at the University of Michigan Medical Center.

Mrs. Bongo was especially impressed with the fact that given enough funds, research may be able to correct defects in unborn children. "Already they can tell, after only a few weeks of preg-

nancy, if a child is not normal." With March of Dimes Foundation grants, such as the \$28,000 recently given to the U. of M. Medical Center, treatments may be perfected.

Mrs. Canine, who is in charge of the Dime Boards around town, has also placed canisters at convenient spots. She is arranging for children to greet shoppers on the street Saturday, Jan. 20. They will offer pretzels and balloons in exchange for contributions.

Mrs. Art Steinaway, Jaycee Auxiliary representative, has sent out newsletters to Chelsea businesses and organizations explaining the good cause. She has prepared and mailed a similar letter for the residents of Chelsea. Response to those mailers will constitute much of the campaign's income.

Mrs. Steinaway is also organizing many marching motors. They will solicit door-to-door, Jan. 28. Another important date in the March of Dimes season is Jan. 27, the day of the annual radio auction. WRNS, Saline, will be auctioning merchandise, provided by the merchants of Ann Arbor, over the air between 9 a.m. and 5 p.m. All proceeds will go to the March of Dimes.

Mrs. Bongo is enthusiastic about another fund-raising event, the fashion show and luncheon at Barton Hills Country Club, Ann Arbor.

"Last year it was delicious," she says. The entire \$10 fee goes to the March of Dimes.

Reservations for the event on Feb. 3, may be made through Mrs. Bongo or Mrs. John Bowie of 1391 King George Blvd., Ann Arbor. (Continued on page six)

Hockey Rink Nearly Ready For Skating

The cold spell last week-end was a boon to the hockey minded citizens of Chelsea as they began flooding the hockey rink at the Fairgrounds. The Chelsea Fire Department pumped water into the rink on Sunday, and again Monday evening when it became apparent the surface needed more work.

It is hoped that play may begin this coming week-end, although the small amount of frost in the ground may delay the opening. Teams are being organized this week, and a season schedule should be ready next week.

The Chelsea District Hockey Association (CDHA) appeals to everyone to stay off the ice until approval for skating has been given. Some early, unauthorized skaters have already done damage to the liner.

Skating at the rink will be allowed under strict supervision only, a policy which was followed last year.

CQE Urges Community Participation

Would you like to see a vocational education program introduced into the Chelsea School System? The Citizens for Quality Education (CQE) suggest that an alternative might be the bussing of children to outlying districts to get that useful training. They find it an unattractive alternative.

The group poses other provocative questions, such as, do you really know what kind of education your child is receiving in kindergarten through 12th grade? Will this community need more schools the way it is growing?

CQE is dedicated to more than merely posing questions. It urges citizens to voice their concerns about the Chelsea school system at its Jan. 16 meeting. The Tuesday night meeting will be held in the high school library at 8 p.m. The meeting will be concerned (Continued on page six)

Several new sponsors have joined the expanded program this year. Ann Arbor Federal Savings, Lloyd Bridges Chevrolet, Chelsea Lumber Co., Chelsea Medical Clinic, A. D. Meyer Agency, and 3-D Sales & Service will be underwriting the games on the ice this year.

The response to the "Hockey Helpers" appeal is slow, according to Jerry Kinge, head of CDHA. "It is important to receive these donations in view of the expanded league," he says. "Anyone can help by donating any amount to the Chelsea District Hockey Association."

The names of those who have given \$25 or more will be placed on the "Hockey Helpers" board at the rink.

Robert Beaudoin, Phil Boham, Rodney Houle, Jerry Kinge, "Lefty" Ross, Terry Finch, and Jim Settle will be coaching the six local teams. The players will learn from their coaches what time play will begin and when they may pick up their uniforms.

"The CDHA is looking forward to a good season of hockey with games against our rivals in Ann Arbor and Jackson," says Kinge. He urges, "Come out and watch the teams in action. It's free!"

Fun Night Set Saturday At High School

Once again the High school gym will be transformed into an arena for Fun Night. The Key Club is sponsoring the event, Saturday. Volleyball, gymnastics, and basketball shooting, are just some of the activities the youngsters may try during the evening. There will be an admission charge of 25 cents for the elementary and junior high students. High schoolers must pay 50 cents to get in.

The Chelsea High Key Club, a service organization, is planning the activity to raise funds which will provide refreshments for players and coaches after basketball games.



PAST PRESIDENTS were honored at the Monday night Kiwanis Club meeting this week. Here, pictured from left, are: James Daniels, Charles Cameron, Wallace Wood, Paul Mann, Dr. Gordon Riehl, Miller (past president of the Highland Park club and speaker for the evening), James Liebeck, Don Turner, Walter Zeeb, Floyd Fowler, William Rademacher, George Palmer, and Louis Burghardt, present president. M. W. McClure, a past president and the last surviving charter member, was unable to attend.



HOME ON THE MATS: It was all or nothing for Tim Reed, Tuesday night. He was one of two JV wrestlers to pin Parma opponents at the dual meet.

Trailer Home Destroyed By Fire Saturday

The Chelsea Fire Department responded to two calls this week, one of which totally destroyed a house trailer, Saturday.

The trailer, inhabited by Dennis Lovely at 17815 Waterloo Rd., went up in flames when the straw surrounding it was ignited by Lovely's propane torch. He had been using the torch to thaw frozen waterpipes.

Lovely suffered burns and cuts on his hands while attempting to fight the blaze. He was treated at the Medical Clinic and released. A small building connected to the trailer was also damaged by the fire. A band, The Butterside Down, had used the structure as a practice room.

The Fire Department was summoned, Jan. 2, to an automobile fire on Jackson Rd. a half mile east of Fletcher Rd. There they extinguished a fire in the car belonging to Jack Owen of Orban Rd. The blaze, which did extensive damage to the vehicle, was apparently started by defective wiring.

Sunday School Teachers Training Course Offered

Monday night, Jan. 8, Immanuel Bible church began hosting a six-week Sunday school teacher's training course. Classes will be held on Monday nights from 7 to 9 p.m.

Chelsea Baptist and Faith Community church, Manchester, are co-operating in this "Night Bible Institute." A choice of courses is offered with the Rev. LeRoy Johnson teaching "Teaching Techniques," the Rev. James Stacey teaching "Old Testament Survey," and Mrs. Johnson teaching "Understanding Children and Youth."

Courses are sponsored by the Evangelical Teacher Training Association, and cost \$2.50. Sunday school teachers, or any persons interested in this training are invited to attend. A teacher training certificate is presented upon satisfactory completion of each course.

Area Planners Invite Public to Annual Meeting

Chelsea Area Regional Planning Commission will hold its first annual meeting Jan. 11, 7:30 p.m., at Sylvan Township Hall. The secretary's annual will be presented at that time. It will summarize the year's activities.

Also at the public meeting, Don Poynton, the representative from the Washtenaw County Planning Commission, will speak on the Report of Land Use in the State of Michigan. CARPC requested a review of this report, issued by the Governor's Commission, to see if it will effect area planning.

The public is urged to attend.

Men's Recreation Basketball Starts Weekly Schedule

The Chelsea Recreation Basketball league kicked off its season, Tuesday night, when it participated in the first Recreation Night at Beach school.

The teams, made up of men 21 years of age and older, will play three games every Tuesday night throughout the winter. League standings will appear weekly in The Chelsea Standard.

Telephone Your Club News To 475-1371.

Mary McClear Will Receive Cap At Nursing College

More than 90 sophomore nursing students at Mercy College of Detroit will pin caps at 2 p.m. Sunday, Jan. 14. They will then be ready for their first stint of student nursing in Detroit area hospitals.

A Chelsea area student will be among them. She is Mary McClear daughter of Mr. and Mrs. Mark McClear of 321 Elm St.

The capping and candlelight ceremony will be in the south conference room of the Mercy Student Center with a reception following.

Patricia Rogowski, Hamtramck, will speak for her classmates. Sister Elizabeth Mary Burns, RSM, nursing department chairman, and Ruth Keenan, a 1972 graduate of Mercy, will be the other speakers.

Nominations Sought for JC Service Award

Good citizens deserve their due, according to the local Jaycees. The group is seeking names of members of the community who have made positive contributions to the Chelsea area.

The winner of the outstanding citizen award will be chosen from nominations submitted by individuals or organizations. The outstanding citizen will be honored during National Jaycee Week, Jan. 16-22.

Any member of the community is eligible. A nomination blank is in this issue of The Standard. It should be mailed to P. O. Box 277, Chelsea.

Sylvan Township Board Discusses Revenue Sharing

When Sylvan Township Board met Tuesday, Jan. 2, the topics of discussion were revenue sharing and a proposed township ordinance concerning subdivision development.

The Board has received nearly \$12,000 from the federal government under the new revenue sharing arrangement. It discussed what kind of things it is allowed to use the money for, but has not decided what the funds will be used for.

The next Sylvan Township Board meeting, which will further examine the two topics, will be the first Tuesday in February.

Beach School Art Show Slated Monday

Creations of the Beach school art classes will be displayed at an Art Show Jan. 15, from 7 p.m. to 9 p.m.

Some of the pieces, made by the students of Mrs. Judy Parker and Mrs. Beverly Yelsik, will be for sale. Many will be for show. The art classrooms at Beach school will be the site of the show.

Grass Lake Man Picked Up in Jackson On Bench Warrant

Jackson City Police called Chelsea's department at 1:30 a.m. Jan. 6, to say that they had picked up Jacky Phillip Jennings, who was wanted on a bench warrant issued by the 14th District Court.

Jennings, a Grass Lake resident, paid a \$50 bond, and appeared in court the next day. He was fined \$25 and costs.



give to the March of Dimes

County Planning Commission Says No to Zoning Ordinance

The Washtenaw County Metropolitan Planning Commission recommended disapproval of the proposed Dexter township zoning ordinance and map at its regular meeting Jan. 3.

"Essentially the ordinance is an improvement over the existing ordinance," says Robert Polens, assistant director of the planning commission. However, the commission notes "several major shortcomings... as well as many smaller typographical errors and errors in articles as they relate to each other."

Of major concern was the elimination of mention of industrial districts. "By doing this, many legitimate land uses are not provided for and thus not regulated in Dexter township," the commission reports. Among these uses are junk yards and sanitary landfills which "should be included and regulated but have not been."

"The courts can rule that section of the ordinance invalid," says Polens, because of the omission of certain uses. He cites a recent case in which the courts decided that Northville had "illegally excluded junk yards" by a similar provision in its ordinance.

The commission also finds regulations on mobile home uses "unclear and in staff's opinion, unreasonable." "The one-acre minimum is 2.5 acres."

William R. McFall Earns Degree at Northrop Institute

William Ray McFall, son of Mr. and Mrs. Arthur Lindauer, 260 Fletcher Rd., was graduated from the College of Engineering at Northrop Institute of Technology in Inglewood, Calif., receiving the Bachelor of Science degree in Engineering Technology, Aircraft Maintenance Option.

McFall was graduated from Ann Arbor High school in 1967.

for any dwelling unit is prohibitive, to mobile homes and apartments," says Polens. The commission believes the limitation "would economically eliminate most mobile home parks."

"There is also some concern over the non-conformities section," says Polens. "We doubt it will accomplish what the Dexter township zoning board says is its purpose."

During public hearings on the ordinance Nov. 27 and Dec. 4, members of the zoning board said that the section is designed to protect neighbors of people who wish to rebuild, as well as facilitate rebuilding of structures by persons who wish to improve their property even though it has not been destroyed by natural means.

"The non-conforming article as re-written does not effectively deal with the non-conforming uses as they relate to the future," the commission reports. Instead, the commission suggests the formation of a "separate residential district to deal directly with resort areas," such as the lake areas.

In addition, the commission recommends that the article "be strengthened to effectively deal with non-conforming uses."

An inconsistency related to the acreage required for keeping livestock was also pointed out. Ten acres is the minimum required in agricultural districts, but in rural reservation districts the minimum is 2.5 acres.

Howell Livestock Auction

Mason 677-8941
The Wise Owl Says Ship to Howell
SALE EVERY MONDAY, 2 p.m.
Phone 546-2470, Bim Franklin

Market Report for Jan. 8

CATTLE
Good to Choice Steers \$39 to \$41.20
Good Choice Heifers, \$36 to \$38
Fed Holstein Steers, \$32 to \$36
Ut.-Std., \$30 and down.

COWS
Heifer Cows, \$29.50 to \$31
Ut.-Commercial, \$27 to \$29.50
Canner-Cutter, \$23 to \$27
Fat Beef Cows, \$23 to \$26

BULLS
Heavy Bologna, \$30 to \$34.70
Light & Common, \$30 and down.

CALVES
Prime, \$60 to \$67
Good-Choice, \$55 to \$60
Heavy Dacorns, \$45 to \$55
Cull & Med., \$30 to \$45

FEEDERS
300-600 lb. Good to Choice Heifers, \$35 to \$42
400-700 lb. Good to Choice Steers, \$40 to \$50
200-300 lb. Holstein Steers, \$38 to \$42
500-600 lb. Holstein Steers, \$32 to \$38
Common-Med., \$32 and down.

SHEEP
Wool Slaughter Lambs:
Choice-Prime, \$30 to \$32.50
Good-Utility, \$28 to \$30
Slaughter Ewes, \$28 to \$32
Feeder Lambs, all weights, \$28 to \$31.50

HOGS
200-230 lb. No. 1, \$38 to \$39.50
200-240 lb. No. 2, \$32 to \$33
240 lb. and up, \$28 to \$32
Light Hogs, \$31 and down.

Sows
Fancy Light, \$25.50 to \$28
300-500 lb., \$25 to \$26.50
500 lb. and up, \$24 to \$26

Boars and Stags
All Weights, \$24 to \$26.50

Feeder Pigs
Per Head, \$18 to \$25.

HAY
1st Cutting, 500 to 750
2nd Cutting, 750 to \$1

STRAW
Per Bale, 600 to 700

COWS
Tested Dairy Cows, \$350 to \$500
Tested Beef Type Cows, \$250 to \$350

JUST REMINISCING

Items Taken from the Files of The Chelsea Standard

4 Years Ago...

Thursday, Jan. 9, 1969—Chelsea District Court Judge Patrick J. Conlin has temporarily set up shop in the council chambers of the Municipal Building while waiting for the former Chelsea State Bank building to be renovated for court use, and while waiting for the office next to the chambers to be cleared of Christmas decorations.

Mr. and Mrs. Frank Abdon celebrated their 77th anniversary Sunday with a family gathering at their home, 447 Railroad St.

The Rev. and Mrs. Theophil W. Menzel will be honored Sunday, Jan. 12, at a farewell reception to be held at Bethel United Church of Christ on Bethel Church Rd., where the Rev. Menzel has been pastor the past 20 years. He is retiring.

A motion to include funds in the 1969-70 school budget for demolition of the former junior high school building passed unanimously at a regular Monday night meeting.

FBI reported crimes in the village decreased during 1968, according to Chelsea police Chief George Meranuck.

Jerry Picklesimer, son of Mr. and Mrs. Ishmael Picklesimer of North St., departed early Monday morning for Detroit where he was assigned to Ft. Knox, Ky., for basic training in the U. S. Army.

A boxcar on an eastbound Penn Central freight train was damaged when it derailed at the McKinley St. crossing and was dragged to Freer Rd. at 11 p.m. Jan. 1.

Henry Schneider, who underwent an operation at U. of M. Hospital, Ann Arbor, on Wednesday was expected to return home before the end of this week.

Kermit Sharp was given treatment at St. Joseph Mercy Hospital Sunday night, after being bitten on the right arm by a dog owned by Herman Reed of Cavanaugh Lake Rd. The dog is now under observation.

Mrs. George Steinbach died suddenly Friday afternoon at her home on Steinbach Rd., at US-12, after a period of eight years, during which her health had been failing.

Newly-elected officers of the K. of P. Lodge are as follows: C.C., Edward Lantis, V.C., Arthur Paul; P., Parker Sharrard; M. of W., Waldemar Grossman.

Carl Haselschwerdt flew his own plane to Chicago on Saturday, and spent the week-end with friends there, flying back again on Sunday.

St. Paul's Sunday school held their annual meeting on Sunday, electing the following officers for 1969: superintendent, Mrs. Fred Seitz; assistant superintendent,

chairman of a committee in charge of instituting the new Explorer program for boys in Chelsea, has announced that a general meeting to explain the program to interested boys and parents will be held next Monday, Jan. 12.

Chelsea's McKune Memorial Public Library became a reality when the McKune property was officially turned over to the Village of Chelsea and the Chelsea Public Library at a brief ceremony Saturday, in the present Public Library room on the second floor of the Municipal Building.

Chelsea had a "New Year's Baby," William Lawrence Amstutz, born at 8:27 a.m. Jan. 1, the son of Mr. and Mrs. Robert Amstutz of S. Main St.

The Washtenaw County Planning Commission will inaugurate a county-wide industrial survey beginning Jan. 1. Though many such surveys have been conducted in Michigan, this is to be the first instance where a truly comprehensive approach has been attempted under the auspices of a county planning commission.

Chelsea police officer, Frank Reed, almost caught an escapee from Jackson prison farm this week. He received a tip that the man, Martin Henson, had hitched a ride in a truck. He pursued the truck, but the escapee fled when the truck stopped.

Henry Schneider, who underwent an operation at U. of M. Hospital, Ann Arbor, on Wednesday was expected to return home before the end of this week.

Kermit Sharp was given treatment at St. Joseph Mercy Hospital Sunday night, after being bitten on the right arm by a dog owned by Herman Reed of Cavanaugh Lake Rd. The dog is now under observation.

Mrs. George Steinbach died suddenly Friday afternoon at her home on Steinbach Rd., at US-12, after a period of eight years, during which her health had been failing.

Newly-elected officers of the K. of P. Lodge are as follows: C.C., Edward Lantis, V.C., Arthur Paul; P., Parker Sharrard; M. of W., Waldemar Grossman.

Carl Haselschwerdt flew his own plane to Chicago on Saturday, and spent the week-end with friends there, flying back again on Sunday.

St. Paul's Sunday school held their annual meeting on Sunday, electing the following officers for 1969: superintendent, Mrs. Fred Seitz; assistant superintendent,

Mrs. Otto Lucht; secretary, Mary Jane Bahnmiller; assistant secretary, Jeanne Meseriva; treasurer, Maynard Oesterle.

M. J. Baxter was in Ann Arbor on Monday afternoon to turn in the tax roll for the village of Chelsea to the county treasurer. The general tax roll was \$9,002; of this amount \$291 was delinquent.

Carl Klink, son of George Klink of Sylvan township, killed a blue racer 4 1/2 feet in length on Thursday. The snake was killed on high ground on the Klink property.

The first quarterly payment of the state aid grant has been made to the Chelsea Public Library by the State Board for Libraries. This quarterly payment amounts to \$70.65. According to state provisions, this sum can be used for salaries, books, in fact all purposes except construction or remodeling buildings.

Joe Weber, general sales manager of Mobile Equipment Products for the Power Equipment Division of Dana Corp., announces the appointment of Chuck Clauson to the position of OEM sales manager.

Weber has also appointed Joe Chiachi, Dan Crosby, Ernie Dellinger, Dave Elkins, Jim Ferguson and Ed Orlovski as district managers.

Clauson has appointed Carl Phillips as product manager of hydraulics, and Don Godsell and Fred Riches as OEM sales engineers.

Gene Zavrel, Power Take-Off product manager, announces that, in addition to their present capacities as product specialists, Bob Bray, Gary Hughes and Bob Snyder will be assigned outside sales responsibilities.

Many thanks for placing your fruit and cider choices with me at this orchard.

GOOD VARIETIES OF APPLES
Excellent Ida Red Winter Apples
\$2.50 - \$5.00 bu.

Closed Mondays and Thursdays.
Open other Days, 10 a.m.-6 p.m.

Next to Highway,
no trouble entering
or leaving.

PHONE 475-2070
H. WEBB

NORTH LAKE ORCHARD

Next to Golf Course on south side of North Lake.
13260 N. TERRITORIAL RD.

Many thanks for placing your fruit and cider choices with me at this orchard.

GOOD VARIETIES OF APPLES
Excellent Ida Red Winter Apples
\$2.50 - \$5.00 bu.

Closed Mondays and Thursdays.
Open other Days, 10 a.m.-6 p.m.

Next to Highway,
no trouble entering
or leaving.

PHONE 475-2070
H. WEBB

REO IS HERE!

REAL ESTATE ONE WEED REALTY, INC., ASSOC.

So that we can better serve our clients in western Washtenaw and eastern Jackson counties, we've opened a branch office at 1196 M-52, Chelsea. Our sales staff has been chosen to give us specialists in farm, vacant land, commercial and residential sales. No matter what you have to sell with our network of offices throughout southeastern Michigan, we are confident we can be of service to you.

TO PLACE YOUR PROPERTY IN THE CAPABLE HANDS OF MICHIGAN'S LARGEST REAL ESTATE ORGANIZATION, CALL

JACK SILKWOOD662-7839 ROBERT PARKER(517) 764-2015
DON SLAZINSKI971-5022 GARY LILLIE769-1634

PROPERTIES AVAILABLE NOW

Plenty of parcels to choose from. Some are rolling, with or without streams, some woods. Call us and find out about our wide selection!

COUNTRY STORE!
A real going business. Beer and wine take-out, three gas pumps, one acre of land, and large 2 bedroom apartment attached to store. A very attractive set-up with much, much room for growth.

COUNTRY HOME!
A very attractive two bedroom home on 20 acres. Pole barn, chicken coop, small John Deere tractor. Asking \$36,400 - bring an offer!

Call Us First - Because We Are

475-8693

1196 M-52, Chelsea

or

761-8313

1300 So. Main, Ann Arbor

MEET YOUR FRIENDS AT INVERNESS INN

Your Innkeepers: Matt and Marge
OFFICIAL SALES AGENT FOR MICH. STATE LOTTERY TICKETS
13996 North Territorial Rd. - North Lake

YOUR FAVORITE MEALS
SHRIMP, CHICKEN & FISH DINNERS

BEER - WINE - LIQUOR PIZZAS
LUNCHEON SPECIALS

Established 1871 The Chelsea Standard Telephone GR 5-3681
Excellence Award By Michigan Press Association
1951-1952-1960-1964-1965-1966
Walter P. Leonard, Editor and Publisher

Published every Thursday morning at 300 North Main Street, Chelsea, Mich. 48118, and second class postage paid at Chelsea, Mich., under the Act of March 3, 1879.

Subscription Rates (Payable in Advance)
In Michigan: One Year \$4.00 Outside Michigan: \$6.00
Six Months \$2.25 Six Months \$3.50
Single Copies \$.15 Single Copies \$.20
Service men or women, anywhere, 1 year \$4.00

MEMBER NATIONAL ADVERTISING REPRESENTATIVE: MICHIGAN NEWSPAPERS, INC.
287 Michigan Ave.
East Lansing, Mich. 48823

Association - Founded 1895



A New Year - Same Policy

Quality Frames and Lenses

Reasonable Prices

WINANS OPTICAL
(In Sylvan Hotel)
Phone 475-1233

114 N. Main St. CHELSEA, MICH.

DAVID WINANS OPTICIAN

APPOINTMENTS NOT NECESSARY

Winter Recreation Program

MONDAYS—
 6:00 to 7:30 p.m.—Golf lessons at Beach school.
 7:30 to 9:00 p.m.—Golf lessons at Beach school.
 9:00 to 10:00 p.m.—Women's conditioning classes at the high school.

TUESDAYS—
 6:30 to 8:30 p.m.—Men's recreation night at Beach school.

THURSDAYS—
 6:30 to 7:30 p.m.—Beginner's tennis classes, at Beach school.
 7:30 to 8:30 p.m.—Intermediate tennis classes, at Beach school.
 8:30 to 10:00 p.m.—Advanced tennis lessons, at Beach school.

SATURDAYS—
 10:00 a.m. to noon—Girls' gymnastic classes, grades three through six at Beach school.
 12:20 to 2:30 p.m.—Girls' gymnastic classes, grades seven through 12, at Beach school.
 10:00 a.m. to noon—Boys' basketball classes, grades three through six, at the high school gym.

New Copying Machine Installed at Library

The McKune Memorial Library announces a new service for the public on a trial basis. It has a new copier which will copy documents, book pages, pictures and legal notices, or any other printed matter, perfectly. This copier can be operated by the individual for a small fee. It is simple to run, and conveniently located in the library.

SUPER SALE

20% to 50% Off

Suits and Sportcoats

STRIETER'S MEN'S WEAR

"The Place To Go For Brands You Know"

Tastes good!

Milk's a taste treat for the entire family to enjoy daily.

Arrange delivery of our top-quality milk and other dairy products.

Hickory Ridge Farm Dairy

(Successor to Weinberg Dairy)
 Stockbridge, Mich. Phone (517) 851-3000



Cager of the Week



JEFF SCHMIDT (54), one of the three senior basketball captains this season, is an easy man to spot on the hardwood. He's the one with the sure eye and steady arm, the 6'6" center. Although he is built to be a basketball player, Jeff also excels on the gridiron. He was awarded the title of most valuable lineman this fall. This man of many talents is also seen breezing around golf courses, and singing up a storm with the St. Paul United Church of Christ Choir. On week-ends and during the summer, Jeff works as a kennel boy for Lane Animal Hospital. He looks forward to a career in either forestry or business administration.

Student Faces Drug Charge . . .

(Continued from page one)

cording to police records, admitted taking two doses of methaqualone, a prescription depressant.

Police records state that the girl took the pills to school and swallowed them there. The girl allegedly said that there were as many as 25 pills of that kind in school that day.

That very day, Jan. 3, the Ann Arbor News ran an article stating that use of the newly-marketed drug, methaqualone, has reached "epidemic" proportions in Ann Arbor.

C. Patrick Babcock, director of Michigan Office of Drug Abuse and Alcoholism, is reported to have said that the drug, like alcohol and barbituates "puts the brain to sleep." The drug is physically addicting, he says.

According to Babcock, methaqualone sets up a dependence if it is used on a regular basis, and withdrawal from it can lead to convulsions, delirium, and death. Persons who "pass out" after taking it may be in danger if they cannot be awakened immediately.

The Chelsea girl will be tried under the disorderly person statute because it concerns persons "appearing in a state of intoxication under the influence of alcoholic beverages, or narcotics, in a public street, or place of assemblage. The girl is presently in the custody of her mother.

Cagers Down Both Dundee, Tecumseh

(Continued from page one)

quarter as Chelsea was outscored again, 20-12. Chelsea was down, 27-18, when the half ran out.

Ron Kiel, Jeff Schmidt, and Tim Treado were responsible for keeping Chelsea in the competition during the first half. All the Chelsea buckets were theirs. The coach lauded Kiel's shooting and rebounding, in fact, "the whole works."

The team as a whole came to life with the toss up opening the second half. John Mann led the comeback as the Bulldogs finally made more baskets than their opponents.

This trend reached full fruition in the final quarter when Dundee was kept to nine points. Chelsea collected 24 points and the game ended with a Chelsea victory, 64-55.

Leading scorers for the blue and gold team were John Mann, with 16 points; Ron Kiel, 12; Tim Treado, 10; and Bruce Guster, with nine. Kiel led the action on the boards, hussling away 13 rebounds during the game.

Dundee's high scorer was Don Bremmher who was on target for 17 points. Mark Schultz was Dundee's next largest contributor. He made 13 points.

With their appetites whetted by victory, the Bulldogs avidly went after more of the same Saturday. Tecumseh, a non-league competitor, could do nothing but assuage Chelsea's craving.

Starters Dave Tucker, Ron Kiel, Jeff Schmidt, Bruce Guster, and John Mann were not in the mood to dally. By the end of the first quarter they had left the Indians behind, 18-8.

Schmidt and Guster led the early scoring. Guster's total of seven was only one less than Schmidt's.

Rick Miller came off the bench in the second quarter to add seven points to the Chelsea rampage. Bruce Guster again added six. Tecumseh racked up 18 points which could not beat Chelsea's 21. The half ended with Tecumseh trailing, 26-39.

Play appeared more evenly matched in the third quarter with both teams chipping in 14 points. Of Chelsea's 14, six belonged to Jeff Schmidt before he was benched with four personal fouls.

Tecumseh was outscored again in the fourth period as Chelsea pulled ahead, 69-53.

Rick Miller, who has not been a starter in the last two games, forged into the foreground, leading the Chelsea scorers. His tally was 17. Jeff Schmidt with 15, was next, followed by Bruce Guster with 12.

NOTICE

The Annual Meeting of Members of the
CHELSEA COMMUNITY CHEST
 Will Be Held
WEDNESDAY, JANUARY 17, 1973
 at 7:30 p.m. in the Second Floor Council Room
 of the Municipal Building Chelsea, Mich.

Business of this meeting will include:

- ★ Election of Officers
- ★ Presentation of the annual reports and any other business that may come before the meeting.

Everyone who made a contribution during the 1972 campaign for funds is considered a member eligible to vote and is urged to attend.

ROBERT THORNTON, President
MRS. ART STEINAWAY, Secretary



is Pleased to Present . . .

BEAUTIFUL PORTRAITS

IN NATURAL LIVING COLOR



\$1 COMPLETE WITH THIS AD

Plus 50c Handling Charge

A Regular \$20.00 Value!

ONE 8x10 NATURAL LIVING COLOR PORTRAIT

Minors must be accompanied by a parent. Only one advertised offer per subject and one per family every three months. Groups \$1.00 per person.

OFFER GOOD ONLY
WEDNESDAY, JANUARY 17 -- 1 p.m.-7 p.m.
At K. of C. Hall
 20750 Old US-12 Chelsea, Michigan



Full Line Supermarket

BEER - WINE - LIQUOR
 LOTTERY TICKETS
 MARATHON GAS PUMPS
 2-CYCO GAS PUMPS
 AUTHORIZED
 FOOD STAMP STORE

Jiffy market

Big Enough To Serve You . . . Small Enough To Know You!

Open 7 Days A Week
 7 a.m. to 10 p.m.
 Corner Sibley & Werkner Rds.
 PHONE 475-1701

Sale Prices Effective
 Thurs., Jan. 11 thru Sun., Jan. 14



MEAT DEPT.

YOUNG - LEAN - TENDER

WHOLE PORK LOINS

Sliced
 Wrapped - Frozen
 At No Charge

89¢ lb.

¼ Pork Loin 95¢ lb. - Rib End Chops 85¢ lb.

WHOLE PORK BUTTS

As is or Sliced

75¢ lb.

Pork Butt Roast 79¢ lb. - Pork Steak 83¢ lb.

PORK NECK BONES lb. 29¢

COURTLAND VALLEY SAUERKRAUT 2-lb. pkg. 29¢

BEEF LIVER lb. 59¢

WILLIAMS ROLL SAUSAGE lb. 79¢

PESCHKE THRIFTY BACON lb. 69¢

CHUNK BOLOGNA lb. 59¢

BORDEN'S JUMBO TREAT

ICE CREAM . . . 1 gal. 97¢

1-LB., 2-OZ. QUAKER QUICK OATS 29¢	DUNCAN HINES CAKE MIXES 29¢
1-LB. PKG. CAMELOT NOODLES 29¢	1-PT., 12-OZ. VERNORS LITE 'N LEMONY 25¢
1-LB., 2-OZ. JAR HOLSUM JELLIES 29¢	GERBER STRAINED BABY FOODS . . . 8¢
14-OZ. BOTTLE DEL MONTE CATSUP . . . 19¢	1-LB. BAG MEADOWDALE CORN CURLS 39¢
4-OZ. CAMELOT MUSHROOMS . . . 25¢	3-OZ. PKG. JELL-O, Asstd. Flavors 9¢

MICHIGAN PIONEER OR BIG CHIEF

SUGAR 5-Lb. Bag 57¢

1 QT. AJAX Dishwasher Lotion . . . 59¢	100-COUNT BAYER ASPIRIN 79¢
40-COUNT KOTEX, reg. or super 99¢	6 FL. OZ. VICKS NYQUIL 99¢
200-COUNT BOX LADY CAMELOT FACIAL TISSUES 15¢	3-OZ. TUBE COLGATE TOOTHPASTE . . . 49¢
NEW DOG FOOD ECON-O-METS, 25-lb. bag . . \$2.49	8-OZ. HELEN CURTIS LEMON SHAMPOO 99¢
WINDPROOF CIGARETTE LIGHTERS . . . 39¢	25-LB. BAG DE-ICING SALT 89¢

YOUR CHOICE OF BRANDS & SIZES

CIGARETTES . . . Carton \$3.27

FROZEN FOODS

MEADOWDALE

Peas or Corn 39¢

1 ½-Lb. Bag

CAMELOT

ORANGE JUICE 6 6-Oz. Cans 99¢

P.D.Q.

Beef Burgers 2 ½-Lb. Pkg. \$1.79

MRS. PAUL'S

FISH STICKS 18 Pcs. 14 Oz. 69¢

Faygo Pop QUARTS 19¢

Your Choice of Flavors Regular or Diet No-Return Bottles

DAIRY DEPT.

RISDON'S HOMOGENIZED FRESH

MILK ½ Gal. 49¢ 1 Gal. 89¢

PILLSBURY

BISCUITS Country Style or Buttermilk Tube of 10 9¢

MEADOWDALE

MARGARINE 1 Lb. in Quarters 14¢

PRODUCE DEPT.

SWEET, JUICY

Tangerines 49¢ doz.

PONTIAC RED

POTATOES 20-Lb. Bag 99¢

U. S. NO. 1

FRESH PEARS 29¢ lb.

MARATHON GAS PUMPS

REG. 35.9 gal. PREMIUM 37.9 gal.

Prices include all taxes.

PLUS FREE TOP VALUE STAMPS

SPECIAL!
 100 FREE TOP VALUE STAMPS With Each Fill-Up
 Thurs., Jan. 11 thru Sun., Jan. 14
 NO COUPON NEEDED

Mch. St. to Lottery Tickets - Fresh Meats - Produce - Groceries - Beer - Wine - Liquor - Magazines - Frozen Foods - Fresh Bakery Goods - Health & Beauty Aids - Daily & Sunday Papers

Ads
Taken
Till 5 p.m.
Tuesday

USE ACTION-PACKED WANT ADS

Just
Phone
475-1371

WANT ADS

The Chelsea Standard WANT AD RATES

PAID IN ADVANCE—All regular advertisements, 50 cents for 25 words or less, each insertion. Count each figure as a word. For more than 25 words add 2 cents per word for each insertion. "Blind" ads or box number ads, 10 cents extra per insertion. CHARGE RATES—Same as cash in advance, with 15 cents bookkeeping charge if not paid before 5 p.m. Tuesday preceding publication. Pay in advance, send cash or stamps and save 15 cents. DISPLAY WANT ADS—Rate, \$1.10 per column inch, single column width only. 6-point and 14-point light type only. No borders or bulidage type. Minimum 1 inch. CARDS OF THANKS or MEMORIALS—Single paragraph style, \$1.00 per insertion for 50 words or less; 2 cents per word beyond 50 words. COPY DEADLINE—5 p.m. Tuesday week of publication.

GAR - NETT'S Flower & Gift Shop

Your Friendly Florist
112 E. Middle St., Chelsea
PHONE 475-1400

Funeral Flowers
Wedding Flowers
Cut Flowers (arranged or boxed)
Potted Flowering Plants
Green Plants - Corsages
WE DELIVER

The January Clearance Sale Is On! SAVE! 1/3 to 1/2 Off DANCER'S

BURGLAR ALARMS

Custom designed for your home, office or business. Many styles to meet any need. Let us show you an application to solve your problem.

Phone 475-7322

1973 is Here & so are We...

— OUR MOTTO —
If we can't LEVEL with you we'll do our best to PLUMB it!

DALE COOK

Presents

Countryside Builders

Best Custom Home Construction, additions - remodeling - aluminum siding - gutters -

YOU NAME IT;
WE DO IT RIGHT.

FIVE GOOD REASONS:

Craftsmanship
Promptness
Courtesy
Honesty

Please Call

DALE COOK - 475-8863

for
Free Estimating
Or, if no answer, call

Dennis Johnston 475-8369
Lenard Kozma 475-7979
Thomas Dunlap 475-7616
James C. Hughes

WANT ADS

1972 VACUUM CLEANER, \$21.50 — Brand new sweeper. Paint damage in shipment. Excellent working condition. Includes all cleaning tools plus rug shampooer. Cash price \$21.50 cash. Call Ypsilanti, collect, 483-4829, 9 a.m. to 9 p.m. Electro Grand.

New '72 Left-Overs Clearance Sale

Quality Used Cars

'72 PLYMOUTH Fury II, 2-dr. hardtop.
'71 DODGE Royal Sportsman wagon, V-8, auto, p.s., p.b., air cond. \$3195
'70 DUSTER, sport coupe, 225, 3-speed, radio, new wide sidewall tires \$1495
'69 DODGE D-200 pick-up, 318, 3-speed, junior West Coast mirrors, radio, new paint \$1395
'69 CHRYSLER Newport 2-dr. hardtop, 383, automatic, p.s., air cond., sharp \$1685
'66 CHRYSLER Newport, 4-dr. 383, automatic, power steering, power brakes, snow tires, \$395
'67 FORD Econoline Van, 6-cyl., 3-speed, radio, 40,000 miles. Sharp. \$395
'67 FURY I 4-dr. sedan, 225, 3-speed, good tires. \$595
'71 CHEVY Cheyenne Super half-ton pickup, 350, automatic, power steering, power brakes, radio \$2295
'66 IMPERIAL Full power, AM-FM, air cond. Must be seen. \$1195

Make Me An Offer I Can't Refuse!

'62 VALIANT 4-dr., 225, automatic, power steering
'64 FORD 2-dr. sedan, 6-cyl., 3-speed. Good transportation.
'62 CHEVY Van

Village Motor Sales, Inc.

IMPERIAL - CHRYSLER
DODGE - PLYMOUTH
Phone 475-8661
1185 Manchester Rd., Chelsea
Hours: 8 a.m. to 6 p.m.
Tues. thru Fri. Until 9 Monday.
9 a.m. to 2 p.m. Saturday

The January Clearance Sale Is On! SAVE! 1/3 to 1/2 Off DANCER'S

ALLSTATE INSURANCE

AUTO - BOAT - COMMERCIAL
LIFE - HEALTH - HOME

Phone Eyes. or Week-ends for

N. H. MILES, Agent
GR 5-8334

Signs Painted 475-7391

WILL BABYSIT in my home, day-time hours. Have references. 475-2943.

WANT ADS

KNAPP SHOES

For Cushion Comfort
Robert Robbins
475-7282

USED CARS

1971 PONTIAC Grandville 4-door hardtop. Loaded. 22,000 miles. Real sharp.
1969 CHEVROLET Impala 4-door hardtop, fully equipped. Air conditioning.
1969 CHEV Biscayne 4-door sedan. Automatic transmission, radio.
1968 CHEV 1/2-ton pick-up. Fleet-stock box, 8-ft. \$495
1970 FORD LTD 4-door. Real nice car, with air \$1,745

Harper Sales & Service

118 West Middle St.
Phone 475-1306
Night phone 475-1608

FRISINGER REALTORS

475-8681
CHELSEA

\$28,500—Larger older home, good location for schools and shopping. Could be 4 or 5 bedrooms, dining room, family room, recreation room.

\$39,900—Grass Lake, 4-bedroom older home in the village, located on 1 acre. Large trees, dining room.

\$19,500—Cavanaugh Lake, 2-bedroom year-round home, newly remodeled.

\$21,900—3-bedroom home, attractively decorated. Fenced back yard.

\$28,900—3-bedroom older home, 1 1/2 baths, close to downtown, garage, all carpeted.

\$49,900—30-acre farm with outbuildings and barn, 6-bedroom home.

NEW—Country living, 1 acre, 3-bedroom, fireplace, family room, 2-car attached garage. Located between Chelsea and Ann Arbor. Chelsea schools. \$49,500.

\$28,900 — 1-acre lot, 4-bedroom, new kitchen. Village of Chelsea.

305-ACRE FARM, 2 miles south of Chelsea; 213 acres 1/4 mile east of Chelsea; 100 acres 2 miles east of Chelsea.

BUILDING SITES — Many to choose from, 1A-5A-10A-15A. Select now for building in the spring.

Frisinger Realtors

MULTI-LISTING
Chelsea 475-8691

Evenings:
Herman Koenn - 475-2613
Mary Ann Staebler - 475-1432
Toby Peterson - 475-2718
Paul Frisinger - 475-2621

POSITION OPEN

Mature woman, 5-day week, 8:30 a.m.-5:00 p.m. 2-girl office, downtown Chelsea. Typing and general office work. Bookkeeping experience helpful. Send detailed resume to Box JA-11, in care of The Chelsea Standard.

SEWING MACHINES — Viking trade-ins, Singer Touch-n-Sews, from \$19.95. Necchi Zig-Zags, \$20.95. Singer's In-Desks, \$59.95. Over 60 Christmas trade-ins, cabinets, portable, from \$9.95 to \$99.95. All reconditioned. Coffman Sewing Machines & Fabrics, 1011 Lansing Ave., Jackson.

The January Clearance Sale Is On! SAVE! 1/3 to 1/2 Off DANCER'S

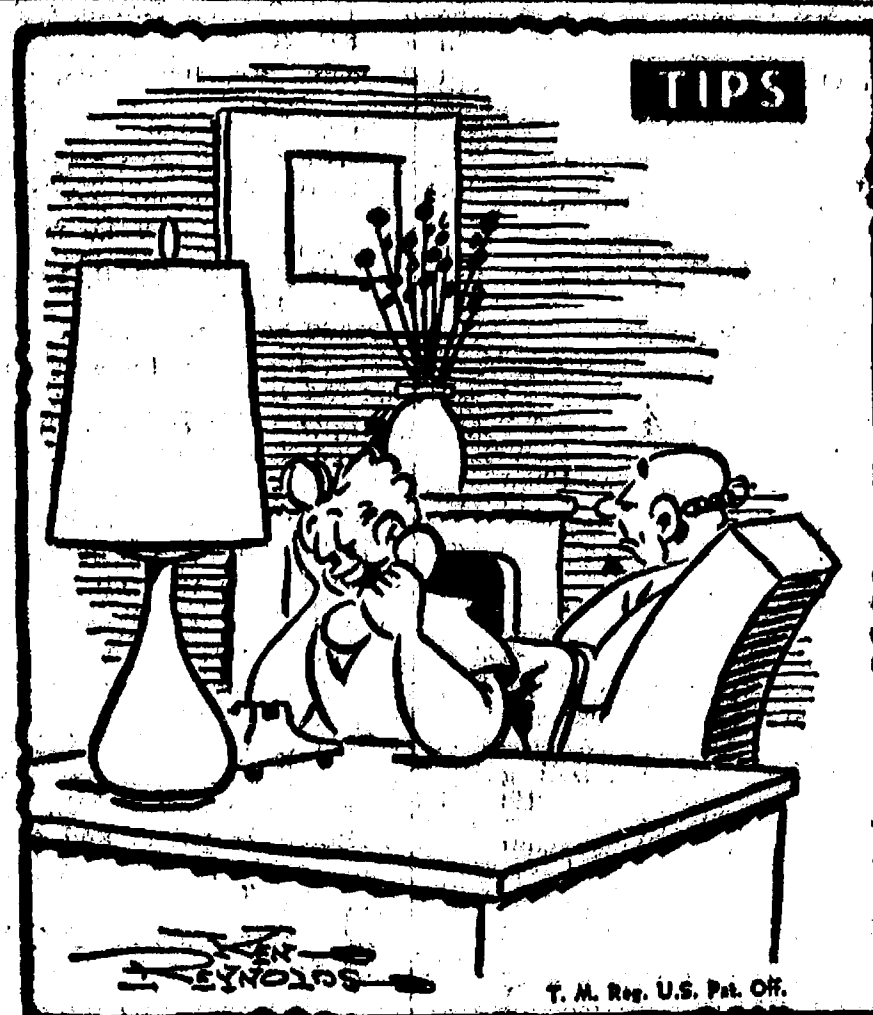
80

ELECTROLUX VACUUM CLEANERS

SALES and SERVICE

JAMES OOX

Ph. 428-2931 or 488-0221
Monmouth



"Alvin doesn't know he bought a color TV I saw in the Standard Want Ads — he's color-blind!"

WANT ADS

SNOWMOBILE TRAILERS, heavy duty doubles, with wide oval tires. Special close-out, \$139.95. Coffman Sports Center, 1011 Lansing Ave., Jackson.

Headquarters for RED WING WORK SHOES

Foster's Men's Wear

CUSTOM BUILDING

LICENSED & INSURED
FREE ESTIMATES

TOTAL CONSTRUCTION SERVICES

—Residential, commercial and industrial
—Garages
—Remodeling - Additions
—Aluminum Siding
—Roofing
—Trenching

SLOCUM CONTRACTORS & BUILDERS

Serving Washtenaw County,
For Over 20 years
20700 OLD US-12
CHELSEA
Phone 475-8321 or 475-7611

New and Remodeling Residential Carpenter Contractor

M. A. LAWRENCE

Ph. 475-1106

REAL ESTATE LISTINGS NEEDED

Give us a call.
Phone 475-8563

KERN REAL ESTATE

616 South Main St.,
Chelsea, Mich.

WANT ADS

WANTED—Office work. Light typing. Call days 688-7010 - after 5:00, 475-2072.

REAL BARGAINS at Sprague Buick-Olds- Opel, Inc.

1972 BUICK Riviera, A. C. Real nice car \$4695

1972 OLDS Cutlass station wagon, A.C. Real nice car \$3495

1971 OLDS 98 4-dr. hardtop Lux sedan, full power, A.C. Nice car \$3895

1971 BUICK Skylark Custom 4-dr. sedan, a.c., 28,000 miles \$2795

1970 PONTIAC Grand Prix, a.c. \$2695

1970 OLDS Cutlass 4-dr. sedan, a.c. Real nice car \$2095

1970 SKYLARK Conv. G.S., a.c., p.s., a black beauty \$2095

1970 BUICK Skylark 2-dr. sedan, a. t. \$1695

1970 CHEV Nova 2-dr. sedan, \$1595

1970 VOLKSWAGEN, clean. \$1395

1969 OLDS Vista Cruiser, 3-seat, a.c. \$1995

1968 DELTA 88 Custom 4-dr. sedan, a.c. \$1795

1968 OLDS Delta 88 2-dr. hardtop, 31,000 miles. Nice. \$1595

1969 PONTIAC Bonneville 4-dr. hardtop, v.t. \$1495

1968 THUNDERBIRD Landau 2-dr. hardtop, a.c. \$1495

1968 BUICK LeSabre Custom 2-dr. hardtop Real nice. \$1295

1968 CHEV Caprice 2-dr. hardtop, v.t. \$1095

1968 OPEL station wagon \$ 795

1967 OLDS Vista Cruiser 2-seat, a.c. Nice car \$1195

1967 BUICK Wildcat 2-dr. hardtop, a.c. \$ 995

1967 BUICK LeSabre 4-dr. sedan, air cond. \$895

1964 DODGE 4-dr. sedan \$ 195

SPRAGUE Buick-Olds-Opel, Inc.

Phone 475-8664
1500 S. Main St., Chelsea

30tf

Country WNRS "The Mighty 1290"

Looking for a part-time sales representative to serve your community. The job offers top commissions, an opportunity to meet people, and the chance to be involved with a dynamic radio station. If you're interested, give Jan a call at 688-0569 or 429-4988. She'll give you more information.

HORSES FOR SALE—Quarter and Grade. Ph. 475-1149.

12tf

WANT ADS

CALL NOW SAVE \$\$\$ Greenwood

for
Siding - Remodeling
FREE ESTIMATES
Call
Chelsea 475-2400

x7tf

Pine Haven Saddlery

4534 Dexter Townhall Rd.
Phone Dexter 426-4268

Complete line of English and Western equipment. 10% discount to all 4-H Club members.

Store Hours: Mon.-Sat., 9-9
Sunday, 10-9

x52tf

A fine selection of New and Used Cars

for immediate delivery

Harper Pontiac Sales & Service

475-1306
Evenings, 475-1608

23tf

THORNTON

475-8628

NORTH LAKE — Brick Ranch - lovely home with 3 bedrooms, 2 baths, 2 fireplaces, large deck off living room and a walk-out basement. Good beach access to North Lake.

MIGHTY SHARP—3-bedroom, 1 1/2 baths, completely and beautifully remodeled with a great back yard adjacent to stream, all within village.

COUNTRY LIVING—3-bedroom, 2-bath brick ranch, family room, stone fireplace, situated on approximately 3/4 acre. Just a short distance from village.

QUAD LEVEL—Brand new brick and cedar siding, 3 bedrooms, family room with fireplace. Mighty sharp home at North Lake.

OLDER HOME — Good condition, 3 bedrooms, near elementary schools. Good starter home.

SEVEN ROOMS—Older home, new kitchen, good location within village.

OVER 100 YEARS OLD—Here is that large older home you always dreamed of in heart of Waterloo Recreation Area. 10 rooms (or more). Condition—Not bad! Charm 100%.

BUILDING SITES — 2 16-acres, rolling, some trees, beautiful settings. Terms.

THORNTON

323 S. Main Realtor Chelsea

Bob Riemenschneider 475-1469

Bob Thornton 475-8857

30

WANT ADS

SEE US for transit mixed concrete. Klumpy Bros. Gravel Co. Phone: Chelsea 475-2530, 4922 Loveland Rd., Grass Lake, Mich. x40tf

Fireplace Builder

Field stone mason, block and brick mason, tuck pointing.

FREE ESTIMATES
Call 475-8025 after 8 p.m.

Patrick Grammatico

x40tf

LADY WANTED to stay with elderly woman. Room and board, and pay. Telephone Mrs. Alvin Wahr, (517) 522-8551, Grass Lake, or write, Chelsea RR2.

x30

Gem Travel Trailers and Campers

PICK UP COVERS

4' ————— \$100.00
26' ————— \$179.00 and up

Triangle Sales

Chelsea 475-4502

40tf

A-1 USED CARS

'72 MAVERICK 2-dr.

'72 VEGA 2-dr.

'72 LTD 2-dr. hardtop

'72 GRAN TORINO 2-dr. hardtop

'71 TORINO GT

'71 TORINO 2-dr. hardtop

'71 GALAXIE 500 4-dr.

'69 FAIRLANE 2-dr. hardtop

'69 GALAXIE 500 4-dr.

'69 MUSTANG fastback

'69 FORD station wagon

'68 MUSTANG 2-dr. hardtop

'68 CHEV Impala 4-dr.

'67 MERCURY 2-dr. hardtop

'67 FORD 2-dr.

Check Our New Triangle Truck Lot

'70 FORD 1/2-ton Pick-up 3 to choose from

'70 CHEV 1/2-ton Pick-up

'69 FORD 1/2-ton Pick-up

'69 CHEV 1 1/2-ton van

'67 INTERNATIONAL Pick-up

'66 DODGE 2-ton van

'65 FORD 3/4-ton utility

'65 FORD 3/4-ton Pick-up

'64 ECONOLINE van

We Have A New Phone Number 475-1301

PALMER FORD

Open Every Evening Till 9:00
All Day Saturday
Chelsea 475-1301

30tf

ROBERT A. ALDER, licensed contractor. Residential building, remodeling. No job too small. 18200 Boyce Rd., Gregory, Mich. 48137. Phone 498-2539.

CAR RENTAL by the day, week-end, week or month. Full insurance coverage, low rates. Call Lyle Christwell at Palmer Motor Sales, 475-1301.

CLINTON CHAIN SAW, 20-in. bar, 6 h.p. engine. New chain and gear. Used very little. \$65. Ph. 475-8661.

x24tf

WANT ADS

VACUUM CLEANERS — Electro-lux, authorized sales and service. James Cox, Manchester. Ph. 422-2931 or 428-8221.

TREE REMOVAL DONE — Also buyers of standing timber and walnut trees. Chelsea 475-7631.

34tf

THE LITTLE FLOWER SHOP

8451 Waltrous Rd., Chelsea
Phone GR 5-8508

Sponsoring Welcome Wagon in Chelsea, Dexter areas.
Flowers, corsages, arrangements and plants.

WANT ADS

FENCE — Chain link or redwood fence, all sizes. Material sold for your installation or we will install it. Call 475-8147 or (517) 522-4337 for free estimate. 52tf

FOR SALE — Inlaid vinyl and linoleum. Also tile, Armstrong and Congoleum. Natin. Installed by skilled craftsmen. Estimates, terms. Merkel Bros. 475-8621. 32tf

G. G. HOPPER
Building Contractors
Phone GR 5-5581
Gregory 498-2148 40tf

Automotive
Rust Proofing
Cars and Trucks

Village
Motor Sales, Inc.
IMPERIAL - CHRYSLER
DODGE - PLYMOUTH
Phone 475-8661
1185 Manchester Rd., Chelsea
Hours: 8 a.m. to 6 p.m.
Tues. thru Fri. Until 9 Monday.
9 a.m. to 2 p.m. Saturday 21tf

Low Low
Down Payment
On New
GOLD KEY
MORTGAGES
For information ask your Realtor
or call 688-7555.

Ann Arbor Federal
Savings
Equal Housing Lender x37tf

4 BEDROOMS
2 new full baths, living room, dining room, and enclosed porch. New cherry cupboards and eating space in the kitchen. New carpeting, draperies and furnace. Very tastefully re-decorated this past year. Garage. Located on a double lot near schools in Grass Lake, 10 miles west of Chelsea. Asking \$34,500.

Willis Real Estate
(517) 522-8481
or
(517) 522-8834 30

SQUIRES MFG. CO., Inc. is now buying standing timber. Call 439-2414, 7 a.m. to 5 p.m., or 439-7787 in the evenings. x32

WANT ADS

PROFESSIONAL CARPET cleaning service expanding to Washtenaw county. All sizes and types of carpets cleaned, day or night. Call 428-7289 or (517) 522-4337 for free estimate. 52tf

ART SUPPLIES — Chelsea Card and Gift Shop, 116 S. Main St., Chelsea. 475-7601. 32

LEHMAN WAHL
Land Appraisal
Residential
and Farm
17087 West Austin Rd
Manchester, Mich.
Area Code 813
428-8898 2tf

FOR SALE — White metal kitchen cabinet with sliding glass doors. Good condition, \$25. Phone 475-8011. 30

FOR REAL DOLLAR SAVINGS be sure and see us before you buy any new or used car. Palmer Motor Sales, Inc. Your Ford Dealer for over 50 years. 2tf

REPAIR SERVICE for household refrigerators, freezers and garbage disposers. Call Bill, 428-8314. x7tf

CLOGGED
SEWER

Reynolds Sewer
Service

We Clean Sewers Without Digging
Drains Cleaned Electrically
FREE ESTIMATES
2-YEAR GUARANTEE
Phone Ann Arbor NO 2-5277
"Sewer Cleaning Is Our Business —
Not A Sideshow" 38tf

EVINGER REAL ESTATE, Dexter, 426-3286, 426-8818. x18tf

FORMAL WEAR

RENTAL SERVICE

Proms - Weddings - Special Events
6 different colors.

Foster's Men's Wear 43tf

SNOWMOBILE BOOTS — End of year clearance. Reg. \$15.95, now \$7.49. Also, children's and ladies' boots, all sizes. Coffman Sports Center, 1011 Lansing Ave., Jackson. 2632, or 13778 Rustic Dr., North Lake. x30

WANT ADS

KITCHEN HELP WANTED — Must be at least 18. Apply in person. Chelsea Restaurant. 16tf

Complete
Body Repair
Service
Bumping - Painting
Windshield and Side Glass
Replacement
Free Pick-up & Delivery
Open Monday Until 9
CONTACT DON KNOLL
FOR FREE ESTIMATE

Village
Motor Sales, Inc.
IMPERIAL - CHRYSLER
DODGE - PLYMOUTH
Phone 475-8661
1185 Manchester Rd., Chelsea
Tues. thru Fri. Until 9 Monday.
9 a.m. to 2 p.m. Saturday 21tf

WE BUY old stringed instruments. Especially interested in guitars, banjos, mandolins, and autoharps. Please call 688-8836. x35

BOWLING SNOW REMOVAL Service. Residential and commercial. Low rates. Prompt and dependable service. Call evenings on the week days and all day on the week-ends. 475-2129. x24tf

CALL FRANK for all your carpet cleaning jobs, morning or week-end. Needs only 3 hours to dry. Only 1¢ per square foot. Phone now for free estimate, 761-4336. All work guaranteed. 83tf

29 ACRES with an all carpeted 2 or 3 bedroom home. Full basement. Woods and stream. East of Grass Lake. \$23,500.

Also, parcels of land in Grass Lake school area.

Winfrey, Inc.
East Office
(517) 764-1416
any time. 80

FOR SALE OR TRADE — Wind-up phonograph, \$40; country store cheese display case, \$40; Toledo meat scales, \$15; antique sled, \$4.50; wrapping paper holder, \$3; small iron scales, with scoop, \$20; silver 8 ft. Christmas tree, \$3; step-down desk chair, \$8 each; old steering wheel, \$3.50; 2 army field desks, \$7.50 each. Phone 426-8838. x24tf

GARAGE SALE — Hip boots, \$5; 16,000 BTU electric heater, \$8; gun rack, \$8; 30-gallon aquarium, and other misc. items. Ph. 475-2632, or 13778 Rustic Dr., North Lake. x30

FOR SALE — 1 acre building sites, Chelsea area. Phone 475-2828. 18tf

PATCHING AND PLASTERING. Call 475-7498. 38tf

ST. LOUIS SCHOOL Record is for sale at the Chelsea Card and Gift Shop. 23tf

FIREPLACE WOOD FOR SALE. Seasoned oak and hickory, and other hard woods. Will deliver. 475-1471. 23tf

FOR SALE — Bird feed and flower seed. 50-lb. bag, \$8.75. Cole's Elevator Co., Inc., Gregory. Phone 498-2735. x31

NOW
Full Time
Complete
Body Shop
Service
Stop in For An Estimate

PALMER FORD
222 S. Main St.
475-1301 27tf

GIVE
A Year 'Round Gift:
Appointment, Scheduling Books
Day at a Glance
Week at a Glance
Month at a Glance
Year at a Glance
Wall Memo Calendars
Chelsea Standard 27tf

FOR SALE — 1 acre building sites, Chelsea area. Phone 475-2828. 18tf

PATCHING AND PLASTERING. Call 475-7498. 38tf

ST. LOUIS SCHOOL Record is for sale at the Chelsea Card and Gift Shop. 23tf

FIREPLACE WOOD FOR SALE. Seasoned oak and hickory, and other hard woods. Will deliver. 475-1471. 23tf

FOR SALE — Bird feed and flower seed. 50-lb. bag, \$8.75. Cole's Elevator Co., Inc., Gregory. Phone 498-2735. x31

NOW
Full Time
Complete
Body Shop
Service
Stop in For An Estimate

PALMER FORD
222 S. Main St.
475-1301 27tf

GIVE
A Year 'Round Gift:
Appointment, Scheduling Books
Day at a Glance
Week at a Glance
Month at a Glance
Year at a Glance
Wall Memo Calendars
Chelsea Standard 27tf

FOR SALE — Bird feed and flower seed. 50-lb. bag, \$8.75. Cole's Elevator Co., Inc., Gregory. Phone 498-2735. x31

NOW
Full Time
Complete
Body Shop
Service
Stop in For An Estimate

PALMER FORD
222 S. Main St.
475-1301 27tf

GIVE
A Year 'Round Gift:
Appointment, Scheduling Books
Day at a Glance
Week at a Glance
Month at a Glance
Year at a Glance
Wall Memo Calendars
Chelsea Standard 27tf

FOR SALE — Bird feed and flower seed. 50-lb. bag, \$8.75. Cole's Elevator Co., Inc., Gregory. Phone 498-2735. x31

NOW
Full Time
Complete
Body Shop
Service
Stop in For An Estimate

PALMER FORD
222 S. Main St.
475-1301 27tf

WANT ADS

FOR SALE — Bird feed and flower seed. 50-lb. bag, \$8.75. Cole's Elevator Co., Inc., Gregory. Phone 498-2735. x31

NOW
Full Time
Complete
Body Shop
Service
Stop in For An Estimate

PALMER FORD
222 S. Main St.
475-1301 27tf

FOR SALE — Bird feed and flower seed. 50-lb. bag, \$8.75. Cole's Elevator Co., Inc., Gregory. Phone 498-2735. x31

NOW
Full Time
Complete
Body Shop
Service
Stop in For An Estimate

PALMER FORD
222 S. Main St.
475-1301 27tf

FOR SALE — Bird feed and flower seed. 50-lb. bag, \$8.75. Cole's Elevator Co., Inc., Gregory. Phone 498-2735. x31

NOW
Full Time
Complete
Body Shop
Service
Stop in For An Estimate

PALMER FORD
222 S. Main St.
475-1301 27tf

FOR SALE — Bird feed and flower seed. 50-lb. bag, \$8.75. Cole's Elevator Co., Inc., Gregory. Phone 498-2735. x31

NOW
Full Time
Complete
Body Shop
Service
Stop in For An Estimate

PALMER FORD
222 S. Main St.
475-1301 27tf

FOR SALE — Bird feed and flower seed. 50-lb. bag, \$8.75. Cole's Elevator Co., Inc., Gregory. Phone 498-2735. x31

NOW
Full Time
Complete
Body Shop
Service
Stop in For An Estimate

PALMER FORD
222 S. Main St.
475-1301 27tf

FOR SALE — Bird feed and flower seed. 50-lb. bag, \$8.75. Cole's Elevator Co., Inc., Gregory. Phone 498-2735. x31

NOW
Full Time
Complete
Body Shop
Service
Stop in For An Estimate

PALMER FORD
222 S. Main St.
475-1301 27tf

FOR SALE — Bird feed and flower seed. 50-lb. bag, \$8.75. Cole's Elevator Co., Inc., Gregory. Phone 498-2735. x31

NOW
Full Time
Complete
Body Shop
Service
Stop in For An Estimate

PALMER FORD
222 S. Main St.
475-1301 27tf

FOR SALE — Bird feed and flower seed. 50-lb. bag, \$8.75. Cole's Elevator Co., Inc., Gregory. Phone 498-2735. x31

NOW
Full Time
Complete
Body Shop
Service
Stop in For An Estimate

PALMER FORD
222 S. Main St.
475-1301 27tf

FOR SALE — Bird feed and flower seed. 50-lb. bag, \$8.75. Cole's Elevator Co., Inc., Gregory. Phone 498-2735. x31

NOW
Full Time
Complete
Body Shop
Service
Stop in For An Estimate

PALMER FORD
222 S. Main St.
475-1301 27tf

FOR SALE — Bird feed and flower seed. 50-lb. bag, \$8.75. Cole's Elevator Co., Inc., Gregory. Phone 498-2735. x31

NOW
Full Time
Complete
Body Shop
Service
Stop in For An Estimate

PALMER FORD
222 S. Main St.
475-1301 27tf

FOR SALE — Bird feed and flower seed. 50-lb. bag, \$8.75. Cole's Elevator Co., Inc., Gregory. Phone 498-2735. x31

NOW
Full Time
Complete
Body Shop
Service
Stop in For An Estimate

PALMER FORD
222 S. Main St.
475-1301 27tf

FOR SALE — Bird feed and flower seed. 50-lb. bag, \$8.75. Cole's Elevator Co., Inc., Gregory. Phone 498-2735. x31

NOW
Full Time
Complete
Body Shop
Service
Stop in For An Estimate

PALMER FORD
222 S. Main St.
475-1301 27tf

FOR SALE — Bird feed and flower seed. 50-lb. bag, \$8.75. Cole's Elevator Co., Inc., Gregory. Phone 498-2735. x31

NOW
Full Time
Complete
Body Shop
Service
Stop in For An Estimate

PALMER FORD
222 S. Main St.
475-1301 27tf

FOR SALE — Bird feed and flower seed. 50-lb. bag, \$8.75. Cole's Elevator Co., Inc., Gregory. Phone 498-2735. x31

NOW
Full Time
Complete
Body Shop
Service
Stop in For An Estimate

PALMER FORD
222 S. Main St.
475-1301 27tf

WANT ADS

ELECTRICAL WIRING of all types New and rewiring. Ph. 428-4855. 22tf

FOR SALE — Horse feed and horse feed pellets. Cole's Elevator Co., Inc., Gregory. Phone 498-2735. x31

ROBERT PATRICK for home improvement, building and maintenance. Ph. 428-8601. 40tf

HAMMOND ORGAN teachers wanted to teach in their own homes. Call Grinnell Brothers, Ann Arbor, 682-5687. 24tf

FOR SALE — Indian cents, postcards, books, foreign coins, Australian opals and other articles. Lawrence E. Guinan, 1571 Sugar Loaf Lake. Call 475-2817. x28tf

FOR RENT — Extra nice 8-room upper. Unfurnished, fully carpeted. Adults. 475-7638. x30

BABYSITTING in my country home. Cavanaugh Lake Rd. Ph. 475-8038. x30

FOR SALE — '69 Camaro and '40 Chevy. Ph. 475-7395. x25tf

CAR & TRUCK LEASING. For details see Lyle Chriswell at Palmer Motor Sales, 475-1301. 49tf

ART SUPPLIES — Chelsea Card and Gift Shop, 116 S. Main St., Chelsea. 475-7601. 32

WIRE-HAIRED TERRIER puppy, five weeks old. Call 598-2503 after 7 p.m. or 475-2014 during day. x30

FOR SALE — Good timothy hay, 60 cents a bale. Ph. 475-2415. x30

FREE fluffy beautiful kittens to good homes. Kitty litter trained. Call 475-8087. x30

ELECTRICAL WIRING of all types New and rewiring. Ph. 428-4855. 22tf

FOR SALE — Horse feed and horse feed pellets. Cole's Elevator Co., Inc., Gregory. Phone 498-2735. x31

ROBERT PATRICK for home improvement, building and maintenance. Ph. 428-8601. 40tf

HAMMOND ORGAN teachers wanted to teach in their own homes. Call Grinnell Brothers, Ann Arbor, 682-5687. 24tf

FOR SALE — Indian cents, postcards, books, foreign coins, Australian opals and other articles. Lawrence E. Guinan, 1571 Sugar Loaf Lake. Call 475-2817. x28tf

FOR RENT — Extra nice 8-room upper. Unfurnished, fully carpeted. Adults. 475-7638. x30

BABYSITTING in my country home. Cavanaugh Lake Rd. Ph. 475-8038. x30

FOR SALE — '69 Camaro and '40 Chevy. Ph. 475-7395. x25tf

CAR & TRUCK LEASING. For details see Lyle Chriswell at Palmer Motor Sales, 475-1301. 49tf

ART SUPPLIES — Chelsea Card and Gift Shop, 116 S. Main St., Chelsea. 475-7601. 32

WIRE-HAIRED TERRIER puppy, five weeks old. Call 598-2503 after 7 p.m. or 475-2014 during day. x30

FOR SALE — Good timothy hay, 60 cents a bale. Ph. 475-2415. x30

FREE fluffy beautiful kittens to good homes. Kitty litter trained. Call 475-8087. x30

ELECTRICAL WIRING of all types New and rewiring. Ph. 428-4855. 22tf

FOR SALE — Horse feed and horse feed pellets. Cole's Elevator Co., Inc., Gregory. Phone 498-2735. x31

ROBERT PATRICK for home improvement, building and maintenance. Ph. 428-8601. 40tf

HAMMOND ORGAN teachers wanted to teach in their own homes. Call Grinnell Brothers, Ann Arbor, 682-5687. 24tf

FOR SALE — Indian cents, postcards, books, foreign coins, Australian opals and other articles. Lawrence E. Guinan, 1571 Sugar Loaf Lake. Call 475-2817. x28tf

FOR RENT — Extra nice 8-room upper. Unfurnished, fully carpeted. Adults. 475-7638. x30

BABYSITTING in my country home. Cavanaugh Lake Rd. Ph. 475-8038. x30

FOR SALE — '69 Camaro and '40 Chevy. Ph. 475-7395. x25tf

CAR & TRUCK LEASING. For details see Lyle Chriswell at Palmer Motor Sales, 475-1301. 49tf

ART SUPPLIES — Chelsea Card and Gift Shop, 116 S. Main St., Chelsea. 475-7601. 32

WIRE-HAIRED TERRIER puppy, five weeks old. Call 598-2503 after 7 p.m. or 475-2014 during day. x30

FOR SALE — Good timothy hay, 60 cents a bale. Ph. 475-2415. x30

FREE fluffy beautiful kittens to good homes. Kitty litter trained. Call 475-8087. x30

ELECTRICAL WIRING of all types New and rewiring. Ph. 428-4855. 22tf

FOR SALE — Horse feed and horse feed pellets. Cole's Elevator Co., Inc., Gregory. Phone 498-2735. x31

ROBERT PATRICK for home improvement, building and maintenance. Ph. 428-8601. 40tf

HAMMOND ORGAN teachers wanted to teach in their own homes. Call Grinnell Brothers, Ann Arbor, 682-5687. 24tf

FOR SALE — Indian cents, postcards, books, foreign coins, Australian opals and other articles. Lawrence E. Guinan, 1571 Sugar Loaf Lake. Call 475-2817. x28tf

FOR RENT — Extra nice 8-room upper. Unfurnished, fully carpeted. Adults. 475-7638. x30

BABYSITTING in my country home. Cavanaugh Lake Rd. Ph. 475-8038. x30

FOR SALE — '69 Camaro and '40 Chevy. Ph. 475-7395. x25tf

CAR & TRUCK LEASING. For details see Lyle Chriswell at Palmer Motor Sales, 475-1301. 49tf

ART SUPPLIES — Chelsea Card and Gift Shop, 116 S. Main St., Chelsea. 475-7601. 32

WIRE-HAIRED TERRIER puppy, five weeks old. Call 598-2503 after 7 p.m. or 475-2014 during day. x30

FOR SALE — Good timothy hay, 60 cents a bale. Ph. 475-2415. x30

FREE fluffy beautiful kittens to good homes. Kitty litter trained. Call 475-8087. x30

ELECTRICAL WIRING of all types New and rewiring. Ph. 428-4855. 22tf

FOR SALE — Horse feed and horse feed pellets. Cole's Elevator Co., Inc., Gregory. Phone 498-2735. x31

ROBERT PATRICK for home improvement, building and maintenance. Ph. 428-8601. 40tf

HAMMOND ORGAN teachers wanted to teach in their own homes. Call Grinnell Brothers, Ann Arbor, 682-5687. 24tf

FOR SALE — Indian cents, postcards, books, foreign coins, Australian opals and other articles. Lawrence E. Guinan, 1571 Sugar Loaf Lake. Call 475-2817. x28tf

FOR RENT — Extra nice 8-room upper. Unfurnished, fully carpeted. Adults. 475-7638. x30

BABYSITTING in my country home. Cavanaugh Lake Rd. Ph. 475-8038. x30

FOR SALE — '69 Camaro and '40 Chevy. Ph. 475-7395. x25tf

CAR & TRUCK LEASING. For details see Lyle Chriswell at Palmer Motor Sales, 475-1301. 49tf

ART SUPPLIES — Chelsea Card and Gift Shop, 116 S. Main St., Chelsea. 475-7601. 32

WIRE-HAIRED TERRIER puppy, five weeks old. Call 598-2503 after 7 p.m. or 475-2014 during day. x30

FOR SALE — Good timothy hay, 60 cents a bale. Ph. 475-2415. x30

FREE fluffy beautiful kittens to good homes. Kitty litter trained. Call 475-8087. x30

ELECTRICAL WIRING of all types New and rewiring. Ph. 428-4855. 22tf

FOR SALE — Horse feed and horse feed pellets. Cole's Elevator Co., Inc., Gregory. Phone 498-2735. x31

ROBERT PATRICK for home improvement, building and maintenance. Ph. 428-8601. 40tf

HAMMOND ORGAN teachers wanted to teach in their own homes. Call Grinnell Brothers, Ann Arbor, 682-5687. 24tf

FOR SALE — Indian cents, postcards, books, foreign coins, Australian opals and other articles. Lawrence E. Guinan, 1571 Sugar Loaf Lake. Call 475-2817. x28tf

FOR RENT — Extra nice 8-room upper. Unfurnished, fully carpeted. Adults. 475-7638. x30

BABYSITTING in my country home. Cavanaugh Lake Rd. Ph. 475-8038. x30

FOR SALE — '69 Camaro and '40 Chevy. Ph. 475-7395. x25tf

CAR & TRUCK LEASING. For details see Lyle Chriswell at Palmer Motor Sales, 475-1301. 49tf

ART SUPPLIES — Chelsea Card and Gift Shop, 116 S. Main St., Chelsea. 475-7601. 32

WIRE-HAIRED TERRIER puppy, five weeks old. Call 598-2503 after 7 p.m. or 475-2014 during day. x30

FOR SALE — Good timothy hay, 60 cents a bale. Ph. 475-2415. x30

FREE fluffy beautiful kittens to good homes. Kitty litter trained. Call 475-8087. x30

ELECTRICAL WIRING of all types New and rewiring. Ph. 428-4855. 22tf

FOR SALE — Horse feed and horse feed pellets. Cole's Elevator Co., Inc., Gregory. Phone 498-2735. x31

ROBERT PATRICK for home improvement, building and maintenance. Ph. 428-8601. 40tf

HAMMOND ORGAN teachers wanted to teach in their own homes. Call Grinnell Brothers, Ann Arbor, 682-5687. 24tf

FOR SALE — Indian cents, postcards, books, foreign coins, Australian opals and other articles. Lawrence E. Guinan, 1571 Sugar Loaf Lake. Call 475-2817. x28tf

FOR RENT — Extra nice 8-room upper. Unfurnished, fully carpeted. Adults. 475-7638. x30

BABYSITTING in my country home. Cavanaugh Lake Rd. Ph. 475-8038. x30

FOR SALE — '69 Camaro and '40 Chevy. Ph. 475-7395. x25tf

CAR & TRUCK LEASING. For details see Lyle Chriswell at Palmer Motor Sales, 475-1301. 49tf

ART SUPPLIES — Chelsea Card and Gift Shop, 116 S. Main St., Chelsea. 475-7601. 32

WIRE-HAIRED TERRIER puppy, five weeks old. Call 598-2503 after 7 p.m. or 475-2014 during day. x30

FOR SALE — Good timothy hay, 60 cents a bale. Ph. 475-2415. x30

FREE fluffy beautiful kittens to good homes. Kitty litter trained. Call 475-8087. x30

ELECTRICAL WIRING of all types New and rewiring. Ph. 428-4855. 22tf

FOR SALE — Horse feed and horse feed pellets. Cole's Elevator Co., Inc., Gregory. Phone 498-2735. x31

ROBERT PATRICK for home improvement, building and maintenance. Ph. 428-8601. 40tf

HAMMOND ORGAN teachers wanted to teach in their own homes. Call Grinnell Brothers, Ann Arbor, 682-5687. 24tf

FOR SALE — Indian cents, postcards, books, foreign coins, Australian opals and other articles. Lawrence E. Guinan, 1571 Sugar Loaf Lake. Call 475-2817. x28tf

FOR RENT — Extra nice 8-room upper. Unfurnished, fully carpeted. Adults. 475-7638. x30

BABYSITTING in my country home. Cavanaugh Lake Rd. Ph. 475-8038. x30

FOR SALE — '69 Camaro and '40 Chevy. Ph. 475-7395. x25tf

CAR & TRUCK LEASING. For details see Lyle Chriswell at Palmer Motor Sales, 475-1301. 49tf

ART SUPPLIES — Chelsea Card and Gift Shop, 116 S. Main St., Chelsea. 475-7601. 32

WIRE-HAIRED TERRIER puppy, five weeks old. Call 598-2503 after 7 p.m. or 475-2014 during day. x30

FOR SALE — Good timothy hay, 60 cents a bale. Ph. 475-2415. x30

FREE fluffy beautiful kittens to good homes. Kitty litter trained. Call 475-8087. x30

ELECTRICAL WIRING of all types New and rewiring. Ph. 428-4855. 22tf

FOR SALE — Horse feed and horse feed pellets. Cole's Elevator Co., Inc., Gregory. Phone 498-2735. x31

ROBERT PATRICK for home improvement, building and maintenance. Ph. 428-8601. 40tf

HAMMOND ORGAN teachers wanted to teach in their own homes. Call Grinnell Brothers, Ann Arbor, 682-5687. 24tf

FOR SALE — Indian cents, postcards, books, foreign coins, Australian opals and other articles. Lawrence E. Guinan, 1571 Sugar Loaf Lake. Call 475-2817. x28tf

FOR RENT — Extra nice 8-room upper. Unfurnished, fully carpeted. Adults. 475-7638. x30

BABYSITTING in my country home. Cavanaugh Lake Rd. Ph. 475-8038. x30

FOR SALE — '69 Camaro and '40 Chevy. Ph. 475-7395. x25tf

CAR & TRUCK LEASING. For details see Lyle Chriswell at Palmer Motor Sales, 475-1301. 49tf

ART SUPPLIES — Chelsea Card and Gift Shop, 116 S. Main St., Chelsea. 475-7601. 32

WIRE-HAIRED TERRIER puppy, five weeks old. Call 598-2503 after 7 p.m. or 475-2014 during day. x30

FOR SALE — Good timothy hay, 60 cents a bale. Ph. 475-2415. x30

FREE fluffy beautiful kittens to good homes. Kitty litter trained. Call 475-8087. x30

ELECTRICAL WIRING of all types New and rewiring. Ph. 428-4855. 22tf

FOR SALE — Horse feed and horse feed pellets. Cole's Elevator Co., Inc., Gregory. Phone 498-2735. x31

ROBERT PATRICK for home improvement, building and maintenance. Ph. 428-8601. 40tf

HAMMOND ORGAN teachers wanted to teach in their own homes. Call Grinnell Brothers, Ann Arbor, 682-5687. 24tf

FOR SALE — Indian cents, postcards, books, foreign coins, Australian opals and other articles. Lawrence E. Guinan, 1571 Sugar Loaf Lake. Call 475-2817. x28tf

FOR RENT — Extra nice 8-room upper. Unfurnished, fully carpeted. Adults. 475-7638. x30

BABYSITTING in my country home. Cavanaugh Lake Rd. Ph. 475-8038. x30

FOR SALE — '69 Camaro and '40 Chevy. Ph. 475-7395. x25tf

CAR & TRUCK LEASING. For details see Lyle Chriswell at Palmer Motor Sales, 475-1301. 49tf

ART SUPPLIES — Chelsea Card and Gift Shop, 116 S. Main St., Chelsea. 475-7601. 32

WIRE-HAIRED TERRIER puppy, five weeks old. Call 598-2503 after 7 p.m. or 475-2014 during day. x30

FOR SALE — Good timothy hay, 60 cents a bale. Ph. 475-2415. x30

FREE fluffy beautiful kittens to good homes. Kitty litter trained. Call 475-8087. x30

ELECTRICAL WIRING of all types New and rewiring. Ph. 428-4855. 22tf

FOR SALE — Horse feed and horse feed pellets. Cole's Elevator Co., Inc., Gregory. Phone 498-2735. x31

ROBERT PATRICK for home improvement, building and maintenance. Ph. 428-8601. 40tf

HAMMOND ORGAN teachers wanted to teach in their own homes. Call Grinnell Brothers, Ann Arbor, 682-5687. 24tf

FOR SALE — Indian cents, postcards, books, foreign coins, Australian opals and other articles. Lawrence E. Guinan, 1571 Sugar Loaf Lake. Call 475-2817. x28tf

FOR RENT — Extra nice 8-room upper. Unfurnished, fully carpeted. Adults. 475-7638. x30

BABYSITTING in my country home. Cavanaugh Lake Rd. Ph. 475-8038. x30

FOR SALE — '69 Camaro and '40 Chevy. Ph. 475-7395. x25tf

CAR & TRUCK LEASING. For details see Lyle Chriswell at Palmer Motor Sales, 475-1301. 49tf

ART SUPPLIES — Chelsea Card and Gift Shop, 116 S. Main St., Chelsea. 475-7601. 32

WIRE-HAIRED TERRIER puppy, five weeks old. Call 598-2503 after 7 p.m. or 475-2014 during day. x30

FOR SALE — Good timothy hay, 60 cents a bale. Ph. 475-2415. x30

FREE fluffy beautiful kittens to good homes. Kitty litter trained. Call 475-8087. x30

ELECTRICAL WIRING of all types New and rewiring. Ph. 428-4855. 22tf

FOR SALE — Horse feed and horse feed pellets. Cole's Elevator Co., Inc., Gregory. Phone 498-2735. x31

ROBERT PATRICK for home improvement, building and maintenance. Ph. 428-8601. 40tf

HAMMOND ORGAN teachers wanted to teach in their own homes. Call Grinnell Brothers, Ann Arbor, 682-5687. 24tf

FOR SALE — Indian cents, postcards, books, foreign coins, Australian opals and other articles. Lawrence E. Guinan, 1571 Sugar Loaf Lake. Call 475-2817. x28tf

FOR RENT — Extra nice 8-room upper. Unfurnished, fully carpeted. Adults. 475-7638. x30

BABYSITTING in my country home. Cavanaugh Lake Rd. Ph. 475-8038. x30

FOR SALE — '69 Camaro and '40 Chevy. Ph. 475-7395. x25tf

CAR & TRUCK LEASING. For details see Lyle Chriswell at Palmer Motor Sales, 475-1301. 49tf

ART SUPPLIES — Chelsea Card and Gift Shop, 116 S. Main St., Chelsea. 475-7601. 32

WIRE-HAIRED TERRIER puppy, five weeks old. Call 598-2503 after 7 p.m. or 475-2014 during day. x30

FOR SALE — Good timothy hay, 60 cents a bale. Ph. 475-2415. x30

FREE fluffy beautiful kittens to good homes. Kitty litter trained. Call 475-8087. x30

ELECTRICAL WIRING of all types New and rewiring. Ph. 428-4855. 22tf

FOR SALE — Horse feed and horse feed pellets. Cole's Elevator Co., Inc., Gregory. Phone 498-2735. x31

ROBERT PATRICK for home improvement, building and maintenance. Ph. 428-8601. 40tf

HAMMOND ORGAN teachers wanted to teach in their own homes. Call Grinnell Brothers, Ann Arbor

Community Calendar

Citizens for Quality Education, Tuesday, Jan. 16, in the library at the high school. Come voice your concerns about the school system.

Chelsea Rebekah Lodge No. 130 Jan. 16, at 7:30 p.m. at the hall. Installation of new officers will be held at Dexter Harmony Lodge on Jan. 15, at 8 p.m. Officers are asked to attend. Each bring one dozen sandwiches.

Esther Chapter of the Congregational church, Thursday, Jan. 18, 8 p.m., at the church.

El Perro 4-H Dog Care and Obeyance Club, Tuesday, Jan. 16, home of Mrs. Bourn, 7:15 p.m. Bring dogs, slip chain and 6-ft. lead.

Weight Watchers meeting at St. Paul church on Old US-12, every Thursday night, 7 p.m. -xadv31

Sixth District meeting of Veterans of Foreign Wars posts and auxiliaries Sunday, Jan. 14, at Graf-O'Hara post home in Ann Arbor.

January birthday pot-luck party and Fun Night at the Korner House, Jan. 19, Friday, at 6:30. Note change of date. Committee: Mr. and Mrs. Watson Hart, Mrs. Katherine Hafner, and Vera Helm.

Olive Lodge No. 156 F&AM E.A. degree Tuesday, Jan. 16, 7:30 p.m.

Past Matrons Club at the home of Aileen Steinbach Jan. 11, at 12:30 p.m. Potluck luncheon.

Lima Township Board meeting the first Monday of the month, 8 p.m. at the town hall.

Older Adult Group every third Saturday of the month. This month, 12:30 p.m., Jan. 20. Bring service and dish to pass. Members of all faiths are welcome.

Lyndon Township Board meeting the second Saturday of the month, 8:30 a.m. at the town hall.

Dexter Township Board meeting first Tuesday, bi-monthly, Dexter Town Hall, 8 p.m.

Sylvan Township Planning Commission Jan. 15, 7:30 p.m., at Sylvan Town Hall.

Chelsea Camera Club, Tuesday, Jan. 16, 7:30 p.m., Sylvan Township Hall. Program: pictures of Egypt, by Paul Papsdorf. Guests welcome.

Sylvan Township Board meeting the first Tuesday of the month, at 7 p.m. at Sylvan Township Hall.

Washtenaw Medical Care Auxiliary monthly meeting at 8:30 a.m. Jan. 17, at the Juvenile Court Center, 2270 Platt Rd. Plans for the coming membership drive will be discussed.

Chelsea Area Regional Planning Committee's annual meeting, Jan. 11, 7:30 p.m., Sylvan Township Hall. The annual report will be issued at that time. Don Pennington will present a review of the Governor's Commission Report on Land Use in the State of Michigan. He will concern himself with how it applies to Chelsea. Public is urged to attend.

Rogers Corners Extension Study Group at the home of Mrs. Vergil Hines, Jan. 16, at 8 p.m. Bring items for silent auction. Proceeds will go to Binet Fund.

The University of Michigan Gilbert and Sullivan Society will hold a mass meeting on Jan. 14, Sunday, at 8 p.m. in the University of Michigan Student Union for general recruitment for the show "Princess Ida." Everyone is welcome. One need not be a student to be in the production or to join.

Singles 25 and Up: Join the Tuesday Night Singles Club for dancing and refreshments at the YM-YWCA in Ann Arbor on Jan. 1, from 9 until midnight. Be prepared to make a New Year's resolution.

Senior Citizen Fun Nite every Friday evening at 7:30.

Starting Jan. 2, McKune Memorial Library will be open new hours. Hours: Monday and Thursday, 10 a.m. to 5 p.m. Tuesday,

Chelsea Riders Score in Recent Bloomfield Event

The Holiday Horse Show was held at the Bloomfield Open Hunt during Christmas week. Hunter, Jumper and Equitation classes were offered. Stoney Ridge Farm riders participated very successfully.

Liz Conlin, riding "Tip O'War," won a first place in Novice Equitation over Fences, a 5th in First Year Green Working Hunter and a 6th in Novice Jumper. Michael Behrman, riding Silent Majority, placed 2nd in First Year Green Working Hunter and 5th in Junior Hunter under Saddle. 14 and under. Sue Gates, on Evermore Ruler, received a 5th in Novice Equitation on the Flat and a 6th in Regular Working Hunter under Saddle. Patti Wallace, riding Irish Coffee, won a first in Junior Working Hunter under Saddle, 15-17 and a 2nd in Second Year Green Working Hunter under Saddle. Scott Alder on Tom Terrific placed 1st in Junior Working Hunter 14 and under. Kim Alder, on Baccardi, placed 2nd in Junior Working Hunter, 15-17, 2nd in ASPCA MacLay, 3rd in Equitation on the Flat, 15-17 and 5th in Regular Working Hunter under Saddle.

On Sunday, Jan. 14, at 9 a.m., Stoney Ridge Farm will host an Open Show with classes for hunters, jumpers, Maiden and Open Equitation.

CQE Seeks To Help...

(Continued from page one)

with helping the school board better fulfill its obligation by tapping citizen concerns and ideas. Additional information may be obtained by calling 475-7282.

Friday and Saturday 12 to 5 p.m. Monday, Wednesday and Friday evenings, 7 to 9 p.m.

The Shindig, sponsored by Farm Bureau Young Farmer Committee, Jan. 20, Freedom Town Hall, Pleasant Lake, 8:30 to 12:30 a.m., with Luther Schable's band.

Chelsea Rebekah Lodge No. 130 Jan. 16, 7:30 p.m. Meet at Dexter Lodge No. 430 Jan. 15, at 7:30 p.m. for joint installation. Long dresses are to be worn by officials.

Rogers Corners Farm Bureau group Friday, Jan. 12, at 8:30 p.m., at the home of Mr. and Mrs. Harold Eismann, 632 Flanders St.

Community Fair Board will meet Tuesday, Jan. 16, 8 p.m. at Service Center, Chelsea Fair, asked to attend.

JV Cagers Lose Two Over Weekend

The third quarter of the Dundee Chelsea JV basketball game, Friday night, was crucial. After maintaining a one-point edge since the first quarter, Chelsea cagers allowed the game to slip out from under them.

The score at the end of the first period was a close 15-14, with Chelsea owning the edge. Both teams, neither displaying much spirit, managed 11 points in the second quarter.

The Dundee players came back after halftime recharged. In the following period they racked up 18 points and held Chelsea to an embarrassing six.

Although Chelsea attempted to emulate Dundee's spark in the fourth quarter with 18 points, Dundee held on to their advantage by tallying 10 points. The game closed with Dundee ahead, 53-50.

Paul Wood, with 18 points, led Chelsea scorers against Dundee. Doug Schrottenboer and Jack Hackworth were next with 10 points each.

Wood was also a leader in rebounding for the Bulldogs. He snatched 13 caroms while Dave Alber got 10.

The Bulldogs suffered a more severe loss the following evening in Indian country. Tecumseh scalped them, 48-77.

The entire game was torture for Chelsea. The blue and gold were trailing by 16 points to Tecumseh's 22 at the end of the first quarter. The Indians increased their margin to 21 points by the end of the half, leading with a score of 46-25.

In the third quarter, Tecumseh was still scoring in the twenties while Chelsea was confined to the single numbers. Finally, in the fourth quarter, as Tecumseh cleared the bench, Chelsea accumulated 15 points and kept Tecumseh to 11. It was little consolation. They had been overwhelmed.

Jack Hackworth was the most successful scorer for Chelsea, with 18 points. Rick Sweeney made 14. In rebounding, Hackworth was again the leader, at seven, with Brian Arnett and Rick Sweeney each grabbing six.

The disappointing week-end series left the JV's with a 3-5 record. They will have an opportunity to even out the score Friday when South Lyon arrives.

"When did you become acquainted with your husband?" a wife was asked. "After I married him," she sighed.

DEATHS

Robert N. Rentschler Dies Suddenly Monday At Home Near Dexter

Robert N. Rentschler, 52, of 6900 Dexter-Pinckney Rd., Dexter township, died suddenly Jan. 8, 1973 at his home.

Mr. Rentschler was born Feb. 5, 1920, in Dexter, the son of Matthew and Lydia Sutter Rentschler. He was a life resident of the area; a veteran of World War II, U.S. Army, and a charter member of the Dexter American Legion Post 557. He had been an auto salesman with Klingler-Warner Pontiac, Inc., Alfred Gross Ford Sales & Service and the Palmer Motor Sales, Inc., in Chelsea, at the time of his death.

June 29, 1946, he married Virginia M. Howard in Dexter; she survives.

Survivors in addition to his widow are two daughters, Mrs. Robert (Cheryl) Dolezky of Dexter, Mrs. Gary (Renee) Pidd of Stockbridge; a sister, Mrs. Walter (Julia) Kranich of Dexter; one grandson, Robert Dolezky; and one granddaughter, Lisa Pidd; an aunt, Mrs. Julia Sutter; several nieces and nephews.

Funeral services were held Wednesday, Jan. 10, at 2 p.m. from the Hosmer Funeral Home with the Rev. T. W. Menzel officiating. Burial followed in Forest Lawn Cemetery in Dexter. Graveside services were under the auspices of Dexter Post No. 557.

Clarence W. Lake

Retired Chrysler Employee Dies at Home in Florida

Clarence W. Lake, 65, of Williamston, died at his home in Eustis, Fla., Friday. He is survived by his widow, Flossie.

He also leaves a son, Gene Lake, of Dexter, and daughter, Mrs. Audrey Stoffer of Williamston, nine brothers and sisters, and grandchildren.

Mr. Lake was a retired employee of Chrysler Proving Grounds here in Chelsea.

Funeral services were Tuesday, at 11 a.m., at the Grosline Memorial Funeral Home in Williamston. He was buried at Memorial Park Cemetery, Flint.

Mrs. John Dunnevant

Former Milan Resident Dies at Methodist Home

Mrs. John (Ada) Dunnevant died Jan. 9, at the Chelsea United Methodist Home, at the age of 91.

She was born Oct. 28, 1881, at Berkeley, Ky. Her parents were John and Paralee Todd Jackson. She married John Dunnevant Nov. 28, 1903. He died June 19, 55. His widow came to the Chelsea Methodist Home from Milan, Sept. 13, 1963.

She is survived by one daughter-in-law, Mrs. Matilda Dunnevant of Carmel, Calif.; two granddaughters, Mrs. Robert North of Taylor, and Mrs. Joyce Opp of Richardson, Tex.; and two great-grandchildren.

Funeral services will be Thursday, Jan. 11, at 2 p.m., at Chelsea Methodist Home Chapel. The Rev. Richard A. Clemans will perform the service. Burial will follow at Marble Park Cemetery, Milan.

Eastern Star Memorial Services were held Wednesday at 8 p.m. at Staffan Funeral Home.

Dimes Fund...

(Continued from page one)

The Pepsi-Cola Co. has come up on a generous way to advertise its product, according to Mrs. Bong. She says the company will donate 10 cents per carton of 10-ounce bottles of Pepsi-Cola sold during the campaign.

This offer is valid during the week of Jan. 26 - Feb. 10. She plans to urge the area stores to prominently display cartons at that time. "I don't think many people know about it," she says.

All the money collected in the area will be given by Mrs. Ray Turner, general treasurer, to the National March of Dimes Foundation. There it will be funneled into projects for children with birth defects.

At one time the monies went to polio research, but since the discovery of the vaccine, birth defects has been the campaign's focus.

HELLER ELECTRIC & INSULATING

Now
Edison Trained
Electric Heat
Dealer

Call us for estimates on all types of wiring.

We insulate old or new homes with Therma-tron insulation and install electric heating systems.

CALL 475-7978
or 475-2096

Woman Walks Away from Wrecked Auto

"She was really lucky," says Chief George Meranuck, who was able to walk away from the wreck of her car.

The road was icy Jan. 4, when the Grass Lake resident was traveling on old US-12 near the intersection of Hoppe Rd. toward Grass Lake. Her car began to spin. It hit a rail, and rolled over and ended up in a ditch. The lady had to be helped out of the twisted vehicle by a helpful farmer, but she was not visibly injured. "Her seat belts had saved her," said Chief Meranuck.

SUPER SALE

Over 100

VAN HEUSEN DRESS SHIRTS

Fancies and Solids

1/2 PRICE

STRIETER'S MEN'S WEAR

"The Place To Go for Brands You Know"

CHELSEA LUMBER CO.

GIVES YOU

25% off

YEAR-ROUND

ON TOP QUALITY LIGHT FIXTURES

WHY PAY MORE?

SHOP "THE FRIENDLY ONE" FOR SAVINGS

ON ALL YOUR ELECTRICAL NEEDS:

12-2 ROMEX w/GROUND, 250-ft. coil\$18⁸⁹

14-2 ROMEX w/GROUND, 250-ft. coil\$12⁵⁹

GAMBLES

110 N. Main
Ph. 475-7472

SPEED QUEEN SUPERTWIN PORTABLE WASHER

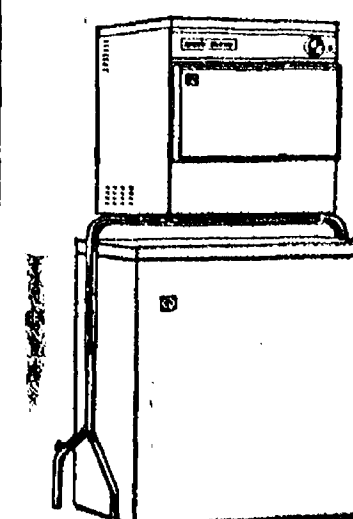
- Agitator Washing Action
- Damp Drying Spinner
- All-Fabric Timer Including Durable Press Setting
- Hand-E-Top Cover



MODEL DH1150
\$189⁹⁵

Avocado or Forest Gold

Compact and portable — ideal for homes where space is a problem. Requires no special plumbing, hooks up to almost any faucet for filling.



Model DE1180
Supertwin
Portable
Dryer on
Chrome
Stand with
Supertwin
Portable
Washer
Below.

MATCHING SUPERTWIN PORTABLE ELECTRIC DRYER

Will Complete Your Compact Home Laundry
Supertwin portable dryer has 90-minute all-fabric timer. Installs almost anywhere—on a counter, on the wall or on an optional chrome stand which has room below for storing the Supertwin portable washer.

MODEL DE1180
\$129⁹⁵

Avocado or Forest Gold

GAMBLES

Start the New Year Right...

dependable MAYTAG Washers - Dryers and Dishwashers

Big Family-Size - Washpower® MAYTAG Automatic WASHERS

- 2 speeds on most models • 3 Temps • Automatic water level control saves water, detergent • Power Fin Agitator—designed for all size loads • Permanent Press Cycle—for today's modern fabrics • Lint filter • Perforated washbasket gets dirt away from clean clothes • Full Time Safety Lid—action stops in seconds when lid is opened. Adjustable leveling legs.

In the Laundry or in the Kitchen, who knows more about getting things clean than Maytag?

Low Temp - Permanent Press MAYTAG Halo-of-Heat® DRYERS

- No Hot Spots!—Gentle, even heat, surrounds clothes • Permanent Press—keeps wrinkles out, creases in • Fine mesh lint filter—filters 100% exhaust air • Full opening safety door—easy loading and unloading • Electronic Control—automatically shuts off when proper dryness has been reached (available on models 606, 806, 906) • 3 way venting.

Maytag Decorator Colors Cost No More Than White!

Built-In or Portable MAYTAG DISHWASHERS

- Maytag's giant capacity washes more dishes, cleaner in one load! • Holds 10" plates in both racks. • Self-cleaning Micro Mesh™ Filter traps thinnest food particles—prevents recirculation. • A full-size spray arm on top, as well as one below for extra cleaning power. Decorator panels & trim kit, also, stainless steel fronts available (optional).

HEYDLAUFF'S

113 N. Main St., Chelsea

Phone 475-1221

We're Loaded

WITH GREAT FOOD VALUES

**OPEN
24 HOURS
7 DAYS
A WEEK**



1101 M-52 CHELSEA

OPEN 24 HOURS-SEVEN DAYS A WEEK

POLLY'S PRIDE U.S.D.A. CHOICE BEEF CENTER CUT BLADE

CHUCK ROAST lb. **58¢**

POLLY'S PRIDE U.S.D.A. CHOICE BEEF 4-7 RIB STANDING

RIB ROAST . . . lb. **98¢**

POLLY'S PRIDE U.S.D.A. CHOICE BEEF BONELESS ROLLED

RUMP ROAST lb. **\$1.29**

POLLY'S PRIDE U.S.D.A. CHOICE BEEF BOSTON ROLLED

BONELESS ROAST lb. **\$1.19**

POLLY'S PRIDE U.S.D.A. CHOICE BEEF

LONDON BROIL STEAK . . lb. **\$1.49**

POLLY'S PRIDE U.S.D.A. CHOICE BEEF

BONELESS TOP SIRLOIN STEAK lb. **\$1.79**

FARMER PEET'S SLICED

LUNCH MEATS . . . lb. **79¢**

HYGRADE ALL MEAT CHUNK

BOLOGNA lb. **59¢**

FRESH GROUND ALL BEEF

GROUND CHUCK . . lb. **89¢**

ECKRICH FRESH PORK ROLL

SAUSAGE lb. **89¢**

ECKRICH FRESH PORK LINK

SAUSAGE 12-Oz. **89¢**

FARMER PEET'S CHUNK

BRAUNSCHWEIGER . lb. **49¢**

POLLY'S PRIDE U.S.D.A. CHOICE BEEF

RIB STEAK lb. **\$1.29**

FRESH FROZEN FILLETS

TURBOT lb. **69¢**

FRESH DRESSED PAN READY

SMELT lb. **49¢**

ECKRICH FRESH PORK PATTIES

SAUSAGE 12-Oz. **89¢**

FOR SLAW OR BOILED DINNERS

CABBAGE . . . lb. **13¢**

HIGH IN VITAMINS

CARROTS 2 1-Lb. Cello Bags **33¢**

FOR SOMETHING DIFFERENT

EGG PLANT Each **19¢**

SWEET MELLOW ANJOU

PEARS Large 110 Size Lb. **29¢**

RED DELICIOUS

APPLES Large 113 Size Lb. **29¢**

WASHINGTON STATE GOLDEN DELICIOUS

APPLES Large 113 Size Lb. **25¢**

COKE 8 Pak 16-Oz. Bottles **69¢** PLUS DEPOSIT

KOTEX 40 Ct. **99¢**

HILLS BROS.

COFFEE 2-Lb. Can **\$1.35**

PILLSBURY HUNGRY JACK INSTANT

POTATOES 16-Oz. Pkg. **39¢**

NABISCO

CHIPS AHOY 14.5-Oz. Pkg. **43¢**

SWIFT PREMIUM SLICED

BACON 1-Lb. Pkg. **89¢**

SWIFT PREMIUM ALL MEAT

FRANKS 12-Oz. Pkg. **49¢**

CHICKEN OF SEA

TUNA 6.5-Oz. Can **35¢**

ELF

CATSUP 14-Oz. Bottle **11¢**

SMUCKER'S STRAWBERRY

PRESERVES 12-Oz. Jar **29¢**

OSAGE FREESTONE

PEACHES 29 Oz. **29¢**

9 LIVES DRY

CAT FOOD 14-Oz. Can **10¢**

FLAVORITE

OLEO Lb. **15¢**

DEL MONTE TOMATO

JUICE 46-Oz. Can **25¢**

HOUSEHOLD CLEANSER

COMET 14-Oz. Can **10¢**

20c OFF LABEL

MR. CLEAN 40 Oz. **49¢**

10c OFF LABEL LIQUID DETERGENT

IVORY 22-Oz. **38¢**

PERSONAL SIZE

IVORY 4 Bars **25¢**

SEALTEST LOW FAT

1% MILK **89¢**

BORDEN'S LITE LINE

ICE CREAM Gallon **87¢** SAVE 32c

BORDEN'S

HEATH BARS 6 Pak **38¢**

KRAFT NATURAL SLICED

SWISS CHEESE 8-Oz. **59¢**

POLLY'S KING SIZE

BREAD 24-Oz. Loaf **24¢** SAVE 5c

HOLSUM COUNTRY STYLE

BREAD 16-Oz. Loaf **39¢** SAVE 4c

BANQUET FROZEN SLICED BEEF, CHICKEN DUMPLINGS, SALISBURY STEAK OR BEEF CHOP SUEY

BUFFET SUPPERS 2-Lb. Pkg. **88¢**

GOOD VALUE FROZEN HASH BROWN

POTATOES 3 2-Lb. Pkgs. **\$1**

FLAVORITE FROZEN MIXED

VEGETABLES 10-Oz. Pkg. **17¢**

JOHNSON

BABY POWDER 14-Oz. **79¢**

POWDER DEODORANT

ULTRA BAN 5-Oz. **77¢**

FLAVORITE FROZEN

CUT CORN 10-Oz. Pkg. **17¢**

FLAVORITE FROZEN

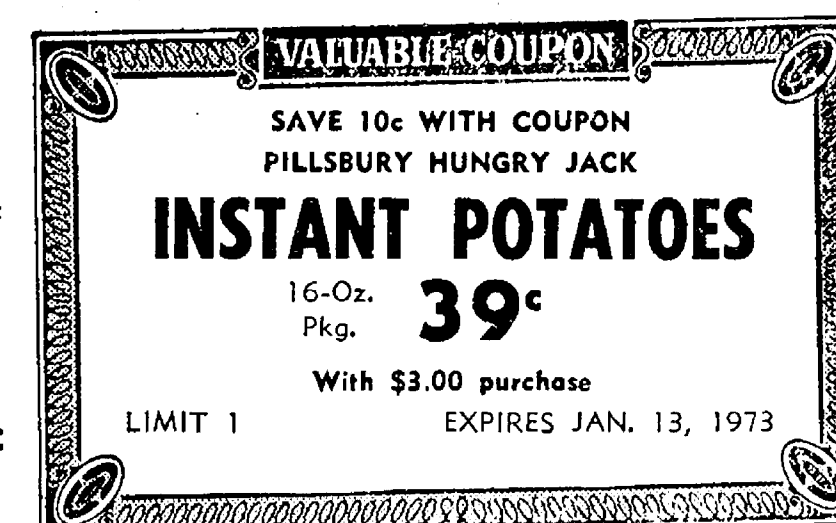
GREEN PEAS 10-Oz. Pkg. **17¢**

JOHNSON

BABY OIL 10-Oz. **89¢**

VASELINE INTENSIVE CARE

LOTION 15-Oz. **99¢**



JOHNSON **BABY LOTION** 9-Oz. **79¢**

SCHICK PLATINUM PLUS **BLADES** 5 Ct. **55¢**

BOWLING NEWS



Hi Point Mixed League

Standings as of Jan. 2

ZAP	355
Guess Who	349
Weber Construction	347
Alley Katz	341
Flat Tires	338
River Rats	322
Ding Bats	318
Ding A Lings	312
Moving Violations	284
Holy Terrors	254
Cheetah Weath's	237
Hi Steppers	229

Tri-City Mixed League

Standings as of Jan. 5

Cheslea Cleaners	49 1/2
McNutt & Lyerla	48 20
Jiffy Market	39 29
Jerry & Doug's Ashland	39 29
3-D Sales & Service	35 33
E. P. Smith Pallet Co.	35 33
Harry Koch & Assoc.	35 33
Craft Appliance Co.	35 33
Foor Mobil	33 1/2
The Lively Ones	32 36
Stivers	31 1/2
Village Inn	30 38
Sprague Buick & Olds	29 1/2
4-W's	26 42
Portage Hardware	21 1/2

Rolling Pin League

Standings as of Jan. 9

Mopper Uppers	49 1/2
Spooners	44 24
Grinders	43 25
Dish Rags	42 26
Mixers	42 36
Coffee Cups	30 38
Brooms	30 38
Kookie Kutters	29 39
Pots	29 39
Egg Beaters	27 1/2
Kitchen Kapers	27 1/2
Jolly Mops	24 1/2

Nite Owl League

Standings as of Jan. 8

Dault & LeVan Build.	48 24
Cavanaugh Lake Store	46 26
Mark IV	45 27
Steele's Heat & Cool.	45 27
Wahl's Arco	42 30
McCalla Mobile Feeds	39 1/2
Pump & Pantry	39 33
Ann Arbor Kirby Co.	38 34
Cheslea Finance	34 1/2
Smith Service	34 38
Ted's Standard	34 38
Jack & Son Barber	32 40
Spoilers	32 40
Team No. 14	24 48

Senior House League

Standings as of Jan. 8

Nam Quad Enterprises	49 23
Seltz's Tavern	45 27
Lloyd Bridges Chev.	43 30
Jim's Taxidermy	43 30
Mark IV Lounge	40 1/2
Sylvan Center	40 1/2
Cheslea Grinding	39 33
Schneider's Builders	39 33
Massey-Ferguson	38 1/2
Schneider's Grocery	38 34
Cheslea Cleaners	34 38
Polly's Market	34 38
Wolverine Race Club	33 1/2
Robards Trucking	33 39
Murphy's Barber Shop	31 1/2
Holsworth Drive-In	27 1/2
Bestline	23 49
Ben's Arco Service	21 51

Cheslea Suburban

Standings as of Jan. 3

Dairy Queen Braizer	42 30
Cheslea Drug	41 31
Fletcher's Foor Mobil	40 32
Cheslea Lanes	38 34
Dana Corp.	38 34
Dancer's	37 35
Cheslea State Bank	37 35
Pittsfield Plastics	35 37
State Farm	34 38
Artes Roll-Ons	33 39
Waterloo Garage	31 41
Frisinger Realty	26 46

Leisure Time League

Standings as of Jan. 1

Unpredictables	43 1/2
Three Stooges	41 1/2
Rug Rats	38 30
Slowpokes	36 1/2
Elm Leaves	36 32
Mishaps	35 33
Misfits	32 36
Bumps & Grinds	31 1/2
Ding-a-lings	27 41
Moppetts	19 49

Cheslea Lanes Mixed

Standings as of Jan. 5

The Pub	85 41
Bushwackers	71 55
Jiffy Market	70 56
Cheslea Lanes	70 56
Ann Arbor Centerless	67 59
Verwey & Henderson	66 60
One Hour Martinizing	66 60
Doug's Painting	64 62
The Pollocks	63 1/2
Jars & Bars	63 63
Hopefuls	62 64
Meabon's	61 65
Terry & Dan	61 65
Bollinger's Sanitation	60 66
Four Roses	57 69
The Gasers	53 73
Gaddis & Austin	49 77
Cheslea Standard	45 1/2

Cheslea Women's Bowling Club

Standings as of Jan. 1

Parish's Cleaners	56 16
Jiffy Mixes	52 20
Cheslea Lanes	49 1/2
Washtenaw Engr. Co.	42 30
Cheslea Grinding	40 32
Schneider's Grocery	40 32
Norris Electric	35 37
Cheslea Milling	34 38
Bridges Chevrolet	33 1/2
Mark IV	32 40
Wolverine Bar	30 42 1/2
Jiffy Market	29 43 1/2
Alley Cats	29 43 1/2
N. American Rockwell	27 45
Ben's Arco	25 47
Heydlauff's	20 52

Charlie Brown and Snoopy's Friends

Standings as of Jan. 6

Peanut League

Standings as of Jan. 6

	W	L
Pin Crackers	48	3
Five Stooges	27	24
Flinstones	23 1/2	27 1/2
Super Strikers	20 1/2	30 1/2
Cheslea Bulldogs	19	32
Snoopy & Red Baron	14	37
Games over 70: R. Krichbaum,		
99; M. Steinaway, 77; J. Krich-		
baum, 73, 82; T. Greenleaf, 73;		
J. Verwey, 70; 70; A. Stock, 76;		
73; M. Alexander, 70; 72; C. Fahrner,		
72; M. A. Petsch, 84, 83; D. Alber,		
92, 98; J. Stock, 79, 76; P. Hoffman,		
73, 102; B. Freeman, 95, 90; G.		
Egeler, 93, 137; D. Thompson, 91;		
99; T. Schulze, 71, 75; M. Bice,		
82; R. Schulze, 84, 91; A. Fletscher,		
78; R. Klink, 95; J. Seyfried, 71.		
Series over 100: D. Thompson		
190; T. Schulze, 146; M. Bice, 151;		
R. Schulze, 175; S. Leisinger, 122		
A. Fletcher, 141; R. Klink, 160		
J. Seyfried, 135; T. Miller, 132		
M. A. Petsch, 167; D. Alber, 190		
J. Stock, 175; P. Hoffman, 175		
B. Freeman, 185; G. Egeler, 230;		
T. Guenther, 103; R. Krichbaum,		
162; M. Steinaway, 164; J. Krich-		
baum, 155; T. Greenleaf, 136; J.		
Verwey, 140; A. Stock, 149; M. Al-		
exander, 142; C. Fahrner, 128.		

Junior House League

Standings as of Jan. 1

3-D Sales & Service	81 38
A. A. Building Supply	79 40
Washtenaw Engineering	77 42
Cheslea Lanes	72 47
Gambles	68 53
Boyer Automotive	63 56
Wolverine, No. 1	62 57
Inverness Inn	61 58
Smith's AAA Service	61 58
Wolverine No. 2	60 59
Jiffy Mix	54 65
Michigan Bell	52 67
Cavanaugh Lake Store	47 72
N. American Rockwell	46 73
Frisinger Realty	37 82
Dana No. 3	34 85

Cheslea Women's Bowling Club

Standings as of Jan. 1

Parish's Cleaners	56 16
Jiffy Mixes	52 20
Cheslea Lanes	49 1/2
Washtenaw Engr. Co.	42 30
Cheslea Grinding	40 32
Schneider's Grocery	40 32
Norris Electric	35 37
Cheslea Milling	34 38
Bridges Chevrolet	33 1/2
Mark IV	32 40
Wolverine Bar	30 42 1/2
Jiffy Market	29 43 1/2
Alley Cats	29 43 1/2
N. American Rockwell	27 45
Ben's Arco	25 47
Heydlauff's	20 52

Cheslea Women's Bowling Club

Standings as of Jan. 1

Parish's Cleaners	56 16
Jiffy Mixes	52 20
Cheslea Lanes	49 1/2
Washtenaw Engr. Co.	42 30
Cheslea Grinding	40 32
Schneider's Grocery	40 32
Norris Electric	35 37
Cheslea Milling	34 38
Bridges Chevrolet	33 1/2
Mark IV	32 40
Wolverine Bar	30 42 1/2
Jiffy Market	29 43 1/2
Alley Cats	29 43 1/2
N. American Rockwell	27 45
Ben's Arco	25 47
Heydlauff's	20 52

Charlie Brown and Snoopy's Friends

Standings as of Jan. 6

Verwey, 185; B. Larson, 164; D. Fouty, 154; S. Klink, 151; D. Frisbie, 167; M. Steele, 167; M. Salyer, 156; D. Fletcher, 169; M. Eder, 157; R. Lutovsky, 157; A. Alexander, 159; A. Bucholz, 160; D. udson, 156; J. Ash, 153; G. Penhallegon, 183; R. Hummel, 163.

Junior Swingers

Standings as of Jan. 1

Hot Shots	57 11
Return of Bully Bros.	50 18
"74" Strikers	43 25
The Rods	42 27
Spectacles	41 28
Team No. 8	31 1/2
The Fancy Five	26 42
Revolutions	26 42
YBA Scorers	18 52
The B.B.A.'s	13 1/2

Charlie Brown & Snoopy's Friends

Standings as of Jan. 6

Buildogs	29 5
Good Guys	28 6
Pink Panthers	20 14
Green Hornets	17 17
Wolverine	17 17
Tigers	17 17
River Rats	17 17
BAA-UC Girls	11 23
Roadrunners	11 23
Red Barons	3 31

Glenn Rentschler

Has Happy Birthday

Glenn Rentschler was given a pleasant surprise late Friday afternoon, Jan. 5, when he received a call to come to Pontiac Service. Upon his arrival, he found Sumner Osterle and his staff of workers had prepared to celebrate Rentschler's birthday. A beautiful birthday cake was enjoyed by all. Rentschler was the honored guest at the home of his son and daughter-in-law, Robert and Christine, at a birthday supper Friday evening. He was surprised to find his sister and her husband, Mr. and Mrs. Robert Rudloff of Jackson, and his nephew and his wife, Mr. and Mrs. Vern Mollenkopf of near Albion present to help him celebrate the occasion.

Glenn Rentschler

Has Happy Birthday

Glenn Rentschler was given a pleasant surprise late Friday afternoon, Jan. 5, when he received a call to come to Pontiac Service. Upon his arrival, he found Sumner Osterle and his staff of workers had prepared to celebrate Rentschler's birthday. A beautiful birthday cake was enjoyed by all. Rentschler was the honored guest at the home of his son and daughter-in-law, Robert and Christine, at a birthday supper Friday evening. He was surprised to find his sister and her husband, Mr. and Mrs. Robert Rudloff of Jackson, and his nephew and his wife, Mr. and Mrs. Vern Mollenkopf of near Albion present to help him celebrate the occasion.

SCHOOL LUNCH MENU

Week of Jan. 15-19
Monday, Jan. 15—Pizza with meat and cheese, creamed peas, bread and butter, juice, pudding with fruit, cookie, milk.
Tuesday, Jan. 16—Beef biscuit, roll, buttered beans, bread and butter, strawberry cake, milk.
Wednesday, Jan. 17—Hot dogs, buns, trimmings, bean soup, dish of fruit, coffee cake, milk.
Thursday, Jan. 18—Goulash with cheese, buttered corn, kitchen bread, butter, fruit, cake, milk.
Friday, Jan. 19—Toasted cheese sandwich, tomato soup, crackers, celery strips, apple dessert, milk.

STOP COLD WINTER DRAFTS
FLEX-O-GLASS
CRYSTAL CLEAR FLEXIBLE PLASTIC
Is the only plastic window material Guaranteed 2 Full Years.
WE HAVE THE GENUINE
Available at
CHELSEA HARDWARE
In 1971-72 the University of Michigan received gifts totaling \$25.6 million.

HOLD IN HEAT, KEEP OUT COLD!

Just Tack Over Windows, Doors, Porches & Breezeways
FLEX-O-GLASS
GENUINE FLEX-O-GLASS is far stronger than polyethylene—it's the only plastic window material GUARANTEED 2 FULL YEARS
AT YOUR HARDWARE, LUMBER & BUILDING SUPPLY STORE

EXPERT BUMPING and PAINTING

FREE ESTIMATES - ALL MAKES

LLOYD BRIDGES CHEVROLET

475-1373 CHELSEA, MICH.

LaFontaine Construction & Development Corp.

GENERAL CONTRACTORS Will Build To Your Specifications

CUSTOM "BUILDER" - Residential, Commercial, Industrial COMPLETE HOME MODERNIZATION SPECIALISTS

★ Additions ★ Rec. Rooms ★ Cement Work
★ Family Rooms ★ Roofing ★ Kitchens
★ Attics ★ Siding ★ Patios

FREE ESTIMATES LICENSED BUILDERS PHONE 475-1389 525 N. MAIN, CHELSEA

PROBLEMS??
That's why we're here!
Trust us. We're the guys who know the inside story... and our shop is equipped for any car emergency. Service is our specialty. So bring your problems to us.

TIRES - BATTERIES - ELECTRONIC TUNE-UPS
BRAKE SERVICE - WHEEL ALIGNMENT - WRECKER SERVICE

Fred's Standard Service

889 S. Main, Chelsea Phone 475-2804

WHAT TOOK YEARS TO BUILD...

A FARMOWNERS POLICY

Complete protection for your home, farm buildings, personal property and personal liability. Your farm... your valuable investment... deserves this easy one package coverage. Choose the Workmen's Compensation plan that fits your operation, large, medium or small. With Farm Bureau you're...
ONE STEP BEYOND FULL PROTECTION THE FULL PROTECTION PACKAGE!

Call

DAVE ROWE 475-8065 DOUG ROBESON 475-7389

FARM BUREAU INSURANCE GROUP

Farm Bureau Mutual & Farm Bureau Life Community Service Insurance & Community Service Acceptance

MEET YOUR FRIENDS

at the

MARK IV LOUNGE

1180 M-52 at Chelsea Lanes

GO BOWLING

This Week-end

Saturday... 11 a.m. to Midnight

Sunday... 12 Noon to 8 p.m.

Thursday... 9 p.m. to 12 p.m.

18 ASTROLINE LANES - BILLIARDS

MICHIGAN SATE LOTTERY TICKET AGENT

CHELSEA LANES, Inc.

PHONE 475-8141

1189 M-52 CHELSEA

FOR A HAPPIER tomorrow

5% PASSBOOK SAVINGS ACCOUNTS

We pay the highest interest rate on Passbook Savings... 5% daily interest, effective annual rate 5.09%. Your funds are always immediately available and earn interest from day of deposit to day of withdrawal. Deposit or withdraw any amount any time.

We pay 5% on Passbook Certificate Accounts with one year maturity and minimum deposit of \$1000 or more. We pay 5% on \$5000 or more with two year maturity. And we pay 6% on \$5000 or more with three, four or five year maturity.

Whatever it takes to brighten your future, a home, a buffer against emergencies, education, retirement reserve... you want your money where it grows faster, safely and is readily accessible. That's Ann Arbor Federal Savings.

Build your happier tomorrow at AAFS.

ANN ARBOR FEDERAL SAVINGS

ANN ARBOR OFFICES—Downtown, Liberty at Division; Westside, Pauline at Stadium; Eastside, Huron Parkway at Platt; Northside, Plymouth at Nixson; CHELSEA—Main Street near Old U.S. 12
Member: Federal Home Loan Bank System • Federal Savings and Loan Insurance Corporation

PER ANNUM

DAILY INTEREST

The University of Michigan's Biological Station near Pellston is the largest fresh-water field station in the world for teaching and research in ecological studies.

The total expenditures to operate the University of Michigan in 1971-72 were \$286.5 million.

You and your business could be wiped out... Get Auto-Owners Multi-Pepl Protection See your A-O Man

A. D. MAYER AGENCY, INC.

"Your Protection Is Our Business"

115 Park St. Chelsea
Phone 479-5061

Auto-Owners INSURANCE COMPANY
Home office at Lansing, Michigan

We are Pleased To Announce That Charles W. Trinkle is the Authorized Blaney Dealer in this area.

★ You can bank on Blaney for high germination and yield.

★ More than 40 years of high field performance.

★ Buy Blaney seed corn in 56 lb. bushels.

If you have any questions, call:
CHARLES TRINKLE, 9631 TRINKLE RD., Dexter, Mich.
PHONE 475-7798

BLANEY FARMS, INC.
R. 4, Madison, Wis.

ALL SILVER REPLATING REDUCED 20%

No charge for straightening* DURING JANUARY ONLY

BEFORE AFTER

EVERY ITEM REPLATED AT SALE PRICES

Since the value of old silverplated items continues to soar... this is an excellent time to take advantage of these low, low prices to have your worn silverware, antiques and family heirlooms replated like new. These pieces are now more valuable than ever and make wonderful gifts. All work QUADRUPLE SILVERPLATED by our skilled silversmiths and Sale prices apply to ALL pieces.

FOR INSTANCE

Article	Reg.	Sale Price
Teapot	\$35.50	\$28.40
Creamer	18.50	14.80
Candlestick (per inch)	2.00	1.60
Sugar bowl	20.50	16.40
Trays (per sq. in.)	.16	.128

OUR NEW REPAIR POLICY

*FREE DENT REMOVAL and straightening on all items we silverplate.

*ONLY \$8.95 FOR ANY AND ALL ADDITIONAL REPAIRS, no matter how extensive, on any piece we silverplate. Includes soldering broken handles, legs, knobs, etc. (Only exceptions are for furnishing new parts)

SALE ENDS JANUARY 31 BRING IN SILVER TODAY!

WINANS JEWELRY

NORTH ELEMENTARY SCHOOL NOTES

FIRST GRADES—

Teachers: Mrs. Peebles, Mrs. Stein and Mrs. White

Our First Grade birthdays for the new month of January are as follows: Sheila Briggs, David Ciunciolo, Michelle Fletcher, Valerie Kelemen, Timmy Mull and Debbie Pritchard.

By now all our First Grade rules have been learned—friends have been made, Christmas is over, and we are ready now for a busy new year of reading, writing and arithmetic.

SECOND GRADE—

Teacher: Mrs. Hakala

Several of us had the mumps during December. John Seyfried had his tonsils out, Chris Martin got hit with a hockey puck while he was watching the Red Wings game. Duane Branch and Todd Guenther had December birthdays.

We spent our vacation going places and visiting friends and relatives. Sharon Buckenberger visited Greenfield Village and Erie Myers saw the Christmas display at Cobo Hall. Johnny Simonson went snowmobiling at Ortonville. Robin Dall went to Kalamazoo. Robin Carlson to Ohio, Damon Mark to Cadillac. Mark Smith to Ypsilanti and Bobby Ciunciolo to Southfield. Now we are ready to settle down and work real hard.

Teacher: Mrs. Morgan

Larry Lindstrom moved over the vacation and can walk to school now. Colleen Lewis had the mumps for Christmas. More of our class are getting 100's on their spelling test by studying the words a little extra time. We have completed our Health and Growth book. Some of our class are having fun with Roman numerals in arithmetic. We have left story problems for

awhile but we will come back to them later. We still need to work on better understanding of story problems.

Teacher: Mrs. Walton

Vacation was fun, but we are glad to be back at school. We sure had a lot of things to show and tell about.

Leroy helped butcher a cow at his grandpa's in Indiana. Chuch, Jeff and Claudette got new skates for Christmas. Tommy went to Arkansas to see his Grandma. Becky rode her horse. Dawn's family got walkie-talkies that they tried out.

We all got lost of presents and had a nice Christmas.

In our classroom we got lots and lots of new books. We are really excited about reading them. We just can't seem to read them fast enough.

MUSIC—

Teacher: Mrs. Dye

I'd like to thank all the parents who attended our Christmas programs. Your interest is always appreciated.

First and second graders will be studying instruments with "Peter and the Wolf" in January.

Kindergarten News Notes

Kindergarten teachers:

Mrs. Bower - Mrs. Michelson

Mrs. Packard - Mrs. VanBlaricum

The children are back full of enthusiasm and bubbling over with stories of activities and new Christmas things. Everyone had an opportunity to show or tell about at least one Christmas gift and event.

We have new children joining our classes. Mrs. Packard's new children are Edward Brosnan, Mary Grifka, Michelle Novak in the morning and Jeri Lynn Kraus in the afternoon. Mrs. Michelson's class had added Marie Kapolka to the morning names. Mrs. Bower has a new boy in the morning. His name is Joseph Gallas.

With the excitement of the holidays over, we are ready to start working on some new learning experiences. Watch for signs of these. Christmas rush has made some children lazy about dressing themselves. We hope parents will help by giving them enough time to zip and button and buckle when they dress for school.

We wish you a happy healthy New Year.

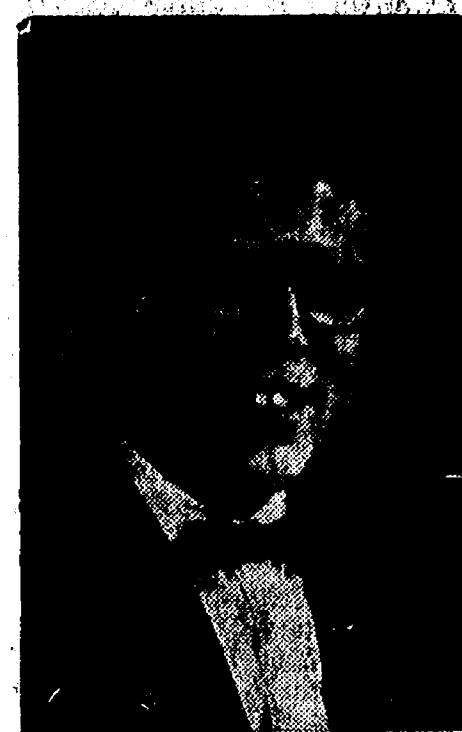
Brownie Troop 169—

Brownie Troop 169 made bird food to put in feeders for the hungry birds to eat this winter. We strung cranberries and popcorn, and made a birdseed bell out of a pine cone.

We talked about plans for future Brownie meetings.

Sandy Frame, scribe.

Saturday's Travel Film Takes Audience on Tour of Norway



JOE ADAIR

Grapplers Down Strong Dundee Team

Despite the absence of several strongmen, Chelsea grapplers started the New Year right by bringing down the undefeated Dundee wrestlers, 25-18.

Captain Mark Montagne was missing from the competition Jan. 4, because of an elbow injury. Don Bollinger was similarly sidelined by a back injury, while John Beeman was out because of illness.

With a bit of rearranging, the Chelsea lineup stretched across the gaps admirably.

Wins were gained by Dale Schoenberg, 17-0; Sam Trachet, 4-2; Dale Poertner, 9-2; Tim Lancaster, 7-0; John Tandy, 4-0; Ken Keiser, 9-7; and Steve Worden by a fall.

Ken Keiser entered the circle at critical stage. Dundee was leading, 18-16. Wrestling in the 185-pound category, Keiser came up with his first varsity win, coming from behind to a 9-7 victory. Steve Worden then gave the Bulldogs the winning margin by pinning his opponent.

Chelsea's JV had a tougher time of it. Losing were Nick Keiser, 4-0; Carmer Slocum, 5-4; and Dave Keiser, 10-4.

The tables turned temporarily. Dave Proctor won 10-0 and Tim Reed scored a pin. Dennis Bauer won, 3-2, while Eric Prinzing came out on top of his match, 8-3.

Unfortunately, the match swung back the other way with Don Harmon and Kenneth Sharpe both losing their matches. The final score was to Dundee's advantage, 19-16.

CHS Wrestling Schedule

Jan. 11—South Lyon home
Jan. 16—Stockbridge there
Jan. 18—Milan home
Jan. 20—South Lyon Tournament	
Jan. 25—Novi there
Jan. 30—Pinckney there
Feb. 1—Dexter home
Feb. 8—Brighton there
Feb. 20—Jackson Northwest home

Contour terracing — the best shape your real estate ever had!

SPECIAL

We have some 14" and 15" Regular & Snow TIRES REDUCED TO \$14.95 (CASH & CARRY ONLY)

Open 6 a.m. to 11 p.m.

GALLUP-SILKWORTH PUMP & PANTRY

295 S. Main Chelsea

Wrestlers Lose to Parma, Flu Bug

Chelsea matmen fell hard, Tuesday night, when they met Parma grapplers on the home mats. The outcome was a 33-26 defeat for the Bulldogs.

In the face of flu, the team was

defenseless. The bug took down Sam Trachet and Steve Worden, who were at home in bed. They would have wrestled at 112 and heavyweight, respectively.

Winning for Chelsea were Dale Schrotenboer, at 98 pounds; Chris Steele, with a pin; and Tim Lancaster, with a 6-2 decision. Darryl West and Ken Keiser won by forfeits.

Although they lost, frosh Mike Keiser and John Marzec put out good efforts. Keiser filled in for

Trachet at 112, while Marzec grappled with last year's 98 pound champ, now at 119.

Carmer Slocum grappled to a draw in the JV contest. Dave Keiser and Steve Straub were decision winners in that area, while Tim Reed and John Tandy won by pins.

Dave Clouse lost, but wrestled well.

The next wrestling match will be again at home, against South Lyon, tonight.

Wrestlers Fall in Parma Tournament

Chelsea's relatively inexperienced wrestlers found themselves overwhelmed by the competition at the Western Invitation at meet at Parma, Jan. 6. Nevertheless, two Chelsea matmen brought home championships.

Tim Lancaster won the 145-pound crown with his performance on the mat. Heavyweight Steve Worden demonstrated his improved skill with such dexterity that he brought home the title in that category.

Dale Poertner also rated notice, coming up with third-place honors.

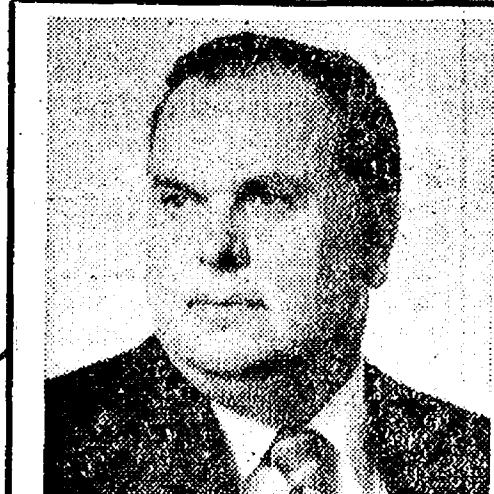
Other Chelsea wrestlers who were able to win matches were Chris Steele, Sam Trachet, Jon Marzec, Darryl West and Mike Agopian.

Coach Richard Bareis evaluated the team's showing as poor, but he hopes, "the experience gained by the younger wrestlers should be of value in the future tournaments."

Chelsea wrestles the league's top contender for the league title tonight, when it faces South Lyon at home.

HOLIDAY IN AIR FORCE

Roy N. Holliday has been promoted to sergeant in the Air Force, —not in the Army as was stated in The Chelsea Standard, Jan. 4.



ELLIS PRATT
428-8046

REAL ESTATE ADVICE

RESIDENTIAL PROPERTIES
COMMERCIAL - INDUSTRIAL
FARMS
VACANT LANDS

SPEAR & ASSOCIATES, REALTORS

1935 Pauline Plaza

769-5750

CARPETING SALE

70 PIECES OF CARPETING

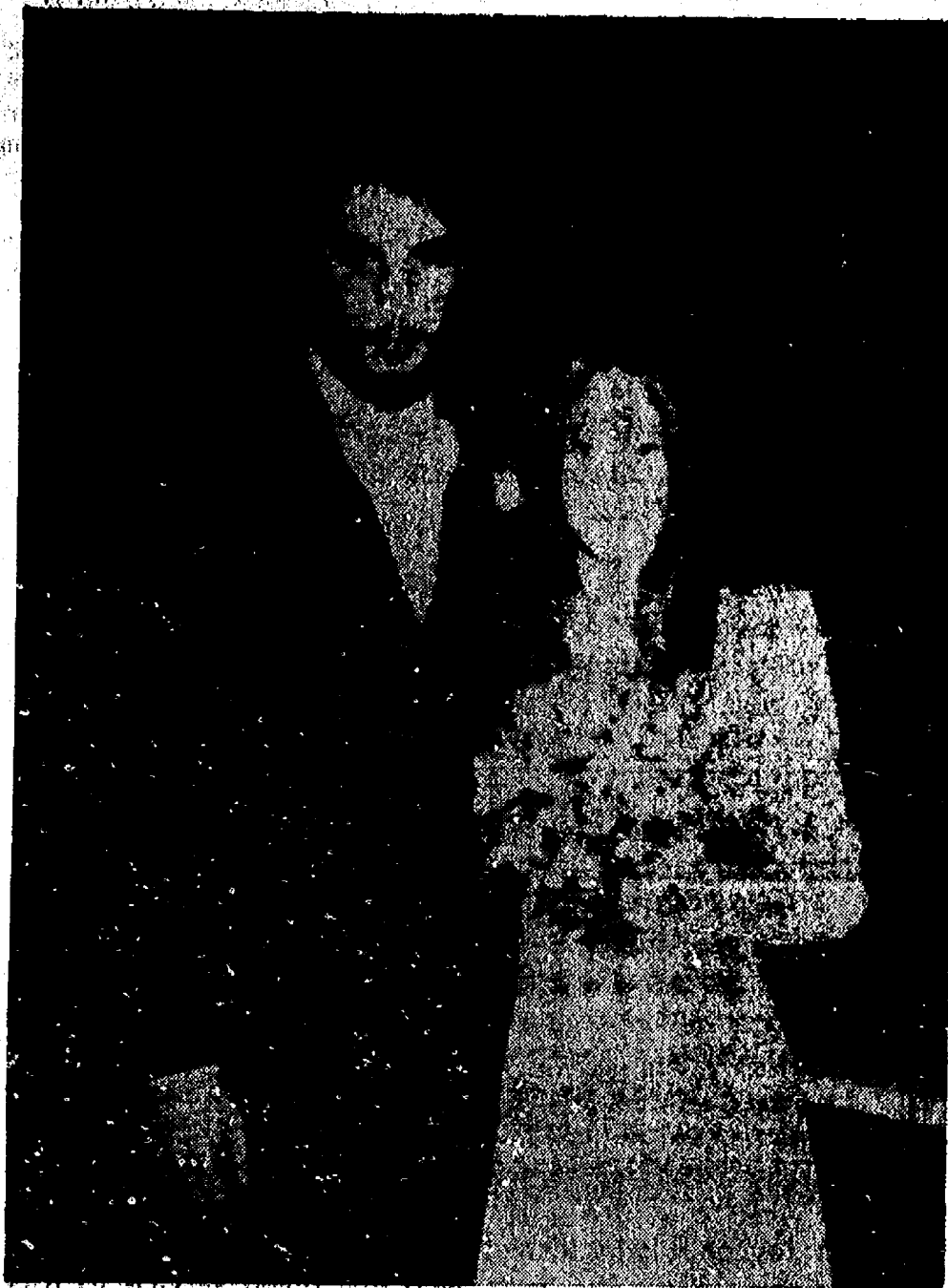
Ends of Rolls and Discontinued Patterns

Sizes range from 9 to 49 yards, in many colors and fabrics. Both home and commercial grades.

Priced at from 1/3 to 2/3 Off Reg. Prices

Shop early for these bargains!

MERKEL Home Furnishings



Mr. and Mrs. Lawrence E. Gorton

Gayle Winans, Lawrence Gorton Are Wed in Saturday Ceremony

Gayle Adrienne Winans became Mrs. Lawrence E. Gorton at an evening service at St. Paul church Jan. 6. In front of 250 guests, the Rev. Warner Siebert pronounced the Chelsea couple man and wife. The ceremony began with a processional written by the bridegroom, the son of Mr. and Mrs. Eldon C. Gorton. The piece, titled "Because She Loves Me," was sung by Keith Pfeifle. Jill Flintoft played a piano solo, Brahms' Intermezzo Op. 118, No. 2, for her part in the service.

The bride, the daughter of Mr. and Mrs. Charles B. Winans of Book St., wore a white velvet, fitted gown of the A-line style. Her head was covered with a short, chantilly lace veil. Her bouquet was of white roses.

Miss Janice Guenther, maid of honor, wore a navy blue fitted A-line dress, the same style as the bride's. Her bouquet was composed of yellow roses and yellow carnations.

Miss Guenther, of Grant St., gave a shower for the bride before the wedding.

Two cousins, Kim and Kyle Kensler of Manchester, and Denise Salyer of Trinkle Rd. were the bridesmaids. They wore blue knit dresses with white collars and long white sleeves. They carried multi-colored bouquets.

The mother of the bride wore a beige knit floor-length gown with a bodice embroidered in blue and pink. Her corsage was of yellow roses. The bridegroom's mother wore pink roses on her medium green chiffon gown.

Miss Petra Spalding, the bride's best friend, was the flower girl.

Dale Robbins was the best man. Groomsmen were Charles B. Winans, II, brother of the bride, Jeff Reed, and Tim Merkel. Curt Winans, cousin of the bride, ushered guests to their seats.

Mr. and Mrs. Guy Spalding, sister and brother-in-law of the bridegroom, hosted a reception following the ceremony in the St. Paul Fellowship Hall. Mrs. James Kensler, aunt of the bride from Manchester, poured coffee, while Mrs. David Winans, another aunt, poured the punch. Mrs. Dale Gorton, an aunt of the bridegroom, from Midland, cut the wedding cake which she had made. Miss Cynthia Pick, Ann Arbor, supervised the guest book.

The couple left for a wedding trip in Michigan with the bride dressed in a two-piece knit dress on which she wore white roses. They will return to 750 Book St.

Both the bride and the bridegroom are graduates of Chelsea High school. The bridegroom has attended the University of Michigan.

Two cousins, Kim and Kyle Kensler of Manchester, and Denise Salyer of Trinkle Rd. were the bridesmaids. They wore blue knit dresses with white collars and long white sleeves. They carried multi-colored bouquets.

The mother of the bride wore a beige knit floor-length gown with a bodice embroidered in blue and pink. Her corsage was of yellow roses. The bridegroom's mother wore pink roses on her medium green chiffon gown.

Miss Petra Spalding, the bride's best friend, was the flower girl.

Dale Robbins was the best man. Groomsmen were Charles B. Winans, II, brother of the bride, Jeff Reed, and Tim Merkel. Curt Winans, cousin of the bride, ushered guests to their seats.

Mr. and Mrs. Guy Spalding, sister and brother-in-law of the bridegroom, hosted a reception following the ceremony in the St. Paul Fellowship Hall. Mrs. James Kensler, aunt of the bride from Manchester, poured coffee, while Mrs. David Winans, another aunt, poured the punch. Mrs. Dale Gorton, an aunt of the bridegroom, from Midland, cut the wedding cake which she had made. Miss Cynthia Pick, Ann Arbor, supervised the guest book.

The couple left for a wedding trip in Michigan with the bride dressed in a two-piece knit dress on which she wore white roses. They will return to 750 Book St.

Both the bride and the bridegroom are graduates of Chelsea High school. The bridegroom has attended the University of Michigan.

Two cousins, Kim and Kyle Kensler of Manchester, and Denise Salyer of Trinkle Rd. were the bridesmaids. They wore blue knit dresses with white collars and long white sleeves. They carried multi-colored bouquets.

The mother of the bride wore a beige knit floor-length gown with a bodice embroidered in blue and pink. Her corsage was of yellow roses. The bridegroom's mother wore pink roses on her medium green chiffon gown.

Miss Petra Spalding, the bride's best friend, was the flower girl.

VFW Auxiliary Buying Flags for Cubs, Brownies

The local group of the VFW Auxiliary to Post No. 4076 met Monday, Jan. 8, in the Rebekah Hall with 11 members present.

The charter was draped in memory of Eva Schiller, who recently died.

The group voted to purchase six flags to be presented to local Cub Scout and Brownie troops. It was also decided to buy insurance to cover members against cancer.

The Sixth District will meet Sunday, Jan. 14, in Ann Arbor. Graf-O'Hara Auxiliary will be the hostess.

After 47 years of VFW National Home history, the residence has opened its doors to children of auxiliary members who are not themselves veterans of overseas wartime services. This was announced by national president, Mrs. Lola Reid of St. Paul, Minn. The main sources of revenue for the National Home are the sale of Buddy Poppies, proceeds from National Home Christmas Seals, gifts and bequests, and \$25 life memberships in the home purchased by VFW members.

The Junior Girl unit of the Home has undertaken the project of replacing the 20-year-old fire truck, through the collection of Betty Crocker coupons. Anyone having such coupons to donate may call Mrs. Fred Klink, Sr.

The following were appointed to act on the January social committee: Sandy Ellenwood, Denise Sweeney, Catherine Kern, and Josephine Eresten. This event will be Jan. 22, in the Rebekah hall.

Modern Mothers Child Study Club met at the home of Mrs. Charles Matloff, Jan. 9, with Mrs. Randall Johnson acting as co-hostess.

A short business meeting was followed by a program on team work presented by Miss Nancy Jones. She is family counselor for the Catholic Social Services.

Guests at the meeting were Mrs. Michael Feeney, Mrs. Ken Tillman, Mrs. Harold Lanktree, Mrs. Grant Thomas, Mrs. Thomas Kett, and Mrs. Robert Harste.

The next meeting, Jan. 23, will be held at the home of Mrs. Paul German.

Persons who are highly allergic to insect stings and liable to get violent reactions to them, should avoid wearing bright jewelry and leather, which, along with certain odors, attract stinging insects, warns the United States Department of Agriculture.

Persons who are highly allergic to insect stings and liable to get violent reactions to them, should avoid wearing bright jewelry and leather, which, along with certain odors, attract stinging insects, warns the United States Department of Agriculture.

Persons who are highly allergic to insect stings and liable to get violent reactions to them, should avoid wearing bright jewelry and leather, which, along with certain odors, attract stinging insects, warns the United States Department of Agriculture.

Persons who are highly allergic to insect stings and liable to get violent reactions to them, should avoid wearing bright jewelry and leather, which, along with certain odors, attract stinging insects, warns the United States Department of Agriculture.

Persons who are highly allergic to insect stings and liable to get violent reactions to them, should avoid wearing bright jewelry and leather, which, along with certain odors, attract stinging insects, warns the United States Department of Agriculture.

Persons who are highly allergic to insect stings and liable to get violent reactions to them, should avoid wearing bright jewelry and leather, which, along with certain odors, attract stinging insects, warns the United States Department of Agriculture.

Persons who are highly allergic to insect stings and liable to get violent reactions to them, should avoid wearing bright jewelry and leather, which, along with certain odors, attract stinging insects, warns the United States Department of Agriculture.

Persons who are highly allergic to insect stings and liable to get violent reactions to them, should avoid wearing bright jewelry and leather, which, along with certain odors, attract stinging insects, warns the United States Department of Agriculture.

Persons who are highly allergic to insect stings and liable to get violent reactions to them, should avoid wearing bright jewelry and leather, which, along with certain odors, attract stinging insects, warns the United States Department of Agriculture.

Persons who are highly allergic to insect stings and liable to get violent reactions to them, should avoid wearing bright jewelry and leather, which, along with certain odors, attract stinging insects, warns the United States Department of Agriculture.

Persons who are highly allergic to insect stings and liable to get violent reactions to them, should avoid wearing bright jewelry and leather, which, along with certain odors, attract stinging insects, warns the United States Department of Agriculture.

Persons who are highly allergic to insect stings and liable to get violent reactions to them, should avoid wearing bright jewelry and leather, which, along with certain odors, attract stinging insects, warns the United States Department of Agriculture.

Persons who are highly allergic to insect stings and liable to get violent reactions to them, should avoid wearing bright jewelry and leather, which, along with certain odors, attract stinging insects, warns the United States Department of Agriculture.

Persons who are highly allergic to insect stings and liable to get violent reactions to them, should avoid wearing bright jewelry and leather, which, along with certain odors, attract stinging insects, warns the United States Department of Agriculture.

Persons who are highly allergic to insect stings and liable to get violent reactions to them, should avoid wearing bright jewelry and leather, which, along with certain odors, attract stinging insects, warns the United States Department of Agriculture.

Persons who are highly allergic to insect stings and liable to get violent reactions to them, should avoid wearing bright jewelry and leather, which, along with certain odors, attract stinging insects, warns the United States Department of Agriculture.

Persons who are highly allergic to insect stings and liable to get violent reactions to them, should avoid wearing bright jewelry and leather, which, along with certain odors, attract stinging insects, warns the United States Department of Agriculture.

Persons who are highly allergic to insect stings and liable to get violent reactions to them, should avoid wearing bright jewelry and leather, which, along with certain odors, attract stinging insects, warns the United States Department of Agriculture.

Persons who are highly allergic to insect stings and liable to get violent reactions to them, should avoid wearing bright jewelry and leather, which, along with certain odors, attract stinging insects, warns the United States Department of Agriculture.

Persons who are highly allergic to insect stings and liable to get violent reactions to them, should avoid wearing bright jewelry and leather, which, along with certain odors, attract stinging insects, warns the United States Department of Agriculture.

Persons who are highly allergic to insect stings and liable to get violent reactions to them, should avoid wearing bright jewelry and leather, which, along with certain odors, attract stinging insects, warns the United States Department of Agriculture.

Persons who are highly allergic to insect stings and liable to get violent reactions to them, should avoid wearing bright jewelry and leather, which, along with certain odors, attract stinging insects, warns the United States Department of Agriculture.

Persons who are highly allergic to insect stings and liable to get violent reactions to them, should avoid wearing bright jewelry and leather, which, along with certain odors, attract stinging insects, warns the United States Department of Agriculture.

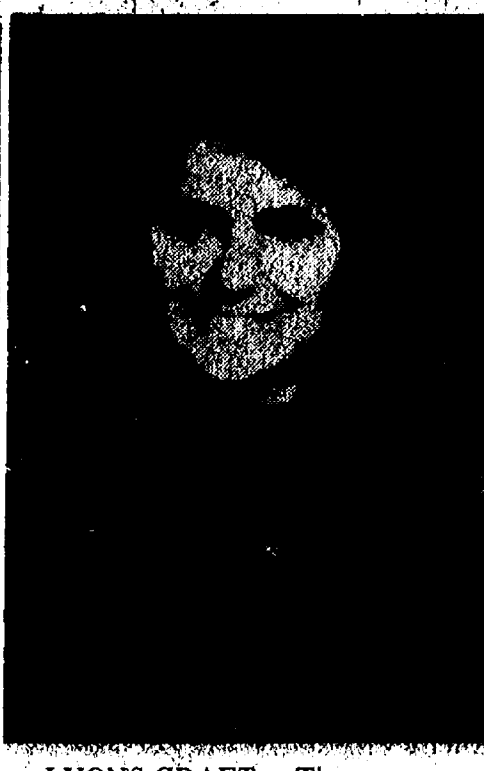
Persons who are highly allergic to insect stings and liable to get violent reactions to them, should avoid wearing bright jewelry and leather, which, along with certain odors, attract stinging insects, warns the United States Department of Agriculture.

Persons who are highly allergic to insect stings and liable to get violent reactions to them, should avoid wearing bright jewelry and leather, which, along with certain odors, attract stinging insects, warns the United States Department of Agriculture.

Persons who are highly allergic to insect stings and liable to get violent reactions to them, should avoid wearing bright jewelry and leather, which, along with certain odors, attract stinging insects, warns the United States Department of Agriculture.

Persons who are highly allergic to insect stings and liable to get violent reactions to them, should avoid wearing bright jewelry and leather, which, along with certain odors, attract stinging insects, warns the United States Department of Agriculture.

Persons who are highly allergic to insect stings and liable to get violent reactions to them, should avoid wearing bright jewelry and leather, which, along with certain odors, attract stinging insects, warns the United States Department of Agriculture.



LYONS-CRAFT: The engagement of Debra Sue Lyons to Bobby Gene Craft has been announced by the future bride's parents, Mr. and Mrs. John L. Lyons of 12177 Roepcke Rd., Gregory. The bridegroom elect is the son of Mr. and Mrs. James L. Craft of 17500 Garvey Rd. Debra is a senior at Chelsea High school. Her fiancé graduated from there in 1972, and attended American Automation Training Center in Kansas City, Mo. He is currently employed by Hoover Ball & Bearing, Ann Arbor, as a computer operator. A wedding date of March 24 has been set.

CHILD STUDY CLUB

Tuesday, Jan. 9, members of the Chelsea Child Study Club met at the Village Beauty Salon for a demonstration by owner, Loretta Panone, and her assistant, Sherri Hamilton. One of the members was treated to a "layer" cut and set while the rest asked questions and discussed hair styling.

Following the program, Mrs. Fred Mills welcomed the members and guest, Mrs. Ralph Owings, to her home for the business meeting. Dessert was served by co-hostesses, Mrs. Fritz Weber and Mrs. Jerry Waldyke.

The next meeting will be Jan. 23 at the home of Mrs. Gerald Giffin. The program will be "A Stitch in Time," with Mrs. Charles Popovitch.

Persons who are highly allergic to insect stings and liable to get violent reactions to them, should avoid wearing bright jewelry and leather, which, along with certain odors, attract stinging insects, warns the United States Department of Agriculture.

Persons who are highly allergic to insect stings and liable to get violent reactions to them, should avoid wearing bright jewelry and leather, which, along with certain odors, attract stinging insects, warns the United States Department of Agriculture.

Persons who are highly allergic to insect stings and liable to get violent reactions to them, should avoid wearing bright jewelry and leather, which, along with certain odors, attract stinging insects, warns the United States Department of Agriculture.

Persons who are highly allergic to insect stings and liable to get violent reactions to them, should avoid wearing bright jewelry and leather, which, along with certain odors, attract stinging insects, warns the United States Department of Agriculture.

Persons who are highly allergic to insect stings and liable to get violent reactions to them, should avoid wearing bright jewelry and leather, which, along with certain odors, attract stinging insects, warns the United States Department of Agriculture.

Persons who are highly allergic to insect stings and liable to get violent reactions to them, should avoid wearing bright jewelry and leather, which, along with certain odors, attract stinging insects, warns the United States Department of Agriculture.

Persons who are highly allergic to insect stings and liable to get violent reactions to them, should avoid wearing bright jewelry and leather, which, along with certain odors, attract stinging insects, warns the United States Department of Agriculture.

Persons who are highly allergic to insect stings and liable to get violent reactions to them, should avoid wearing bright jewelry and leather, which, along with certain odors, attract stinging insects, warns the United States Department of Agriculture.

Persons who are highly allergic to insect stings and liable to get violent reactions to them, should avoid wearing bright jewelry and leather, which, along with certain odors, attract stinging insects, warns the United States Department of Agriculture.

Persons who are highly allergic to insect stings and liable to get violent reactions to them, should avoid wearing bright jewelry and leather, which, along with certain odors, attract stinging insects, warns the United States Department of Agriculture.

Persons who are highly allergic to insect stings and liable to get violent reactions to them, should avoid wearing bright jewelry and leather, which, along with certain odors, attract stinging insects, warns the United States Department of Agriculture.

Persons who are highly allergic to insect stings and liable to get violent reactions to them, should avoid wearing bright jewelry and leather, which, along with certain odors, attract stinging insects, warns the United States Department of Agriculture.

Persons who are highly allergic to insect stings and liable to get violent reactions to them, should avoid wearing bright jewelry and leather, which, along with certain odors, attract stinging insects, warns the United States Department of Agriculture.

Persons who are highly allergic to insect stings and liable to get violent reactions to them, should avoid wearing bright jewelry and leather, which, along with certain odors, attract stinging insects, warns the United States Department of Agriculture.

Persons who are highly allergic to insect stings and liable to get violent reactions to them, should avoid wearing bright jewelry and leather, which, along with certain odors, attract stinging insects, warns the United States Department of Agriculture.

Persons who are highly allergic to insect stings and liable to get violent reactions to them, should avoid wearing bright jewelry and leather, which, along with certain odors, attract stinging insects, warns the United States Department of Agriculture.

Persons who are highly allergic to insect stings and liable to get violent reactions to them, should avoid wearing bright jewelry and leather, which, along with certain odors, attract stinging insects, warns the United States Department of Agriculture.

Persons who are highly allergic to insect stings and liable to get violent reactions to them, should avoid wearing bright jewelry and leather, which, along with certain odors, attract stinging insects, warns the United States Department of Agriculture.

Persons who are highly allergic to insect stings and liable to get violent reactions to them, should avoid wearing bright jewelry and leather, which, along with certain odors, attract stinging insects, warns the United States Department of Agriculture.

Persons who are highly allergic to insect stings and liable to get violent reactions to them, should avoid wearing bright jewelry and leather, which, along with certain odors, attract stinging insects, warns the United States Department of Agriculture.

Persons who are highly allergic to insect stings and liable to get violent reactions to them, should avoid wearing bright jewelry and leather, which, along with certain odors, attract stinging insects, warns the United States Department of Agriculture.

Persons who are highly allergic to insect stings and liable to get violent reactions to them, should avoid wearing bright jewelry and leather, which, along with certain odors, attract stinging insects, warns the United States Department of Agriculture.

Persons who are highly allergic to insect stings and liable to get violent reactions to them, should avoid wearing bright jewelry and leather, which, along with certain odors, attract stinging insects, warns the United States Department of Agriculture.

Persons who are highly allergic to insect stings and liable to get violent reactions to them, should avoid wearing bright jewelry and leather, which, along with certain odors, attract stinging insects, warns the United States Department of Agriculture.

Persons who are highly allergic to insect stings and liable to get violent reactions to them, should avoid wearing bright jewelry and leather, which, along with certain odors, attract stinging insects, warns the United States Department of Agriculture.

Persons who are highly allergic to insect stings and liable to get violent reactions to them, should avoid wearing bright jewelry and leather, which, along with certain odors, attract stinging insects, warns the United States Department of Agriculture.

Persons who are highly allergic to insect stings and liable to get violent reactions to them, should avoid wearing bright jewelry and leather, which, along with certain odors, attract stinging insects, warns the United States Department of Agriculture.

Persons who are highly allergic to insect stings and liable to get violent reactions to them, should avoid wearing bright jewelry and leather, which, along with certain odors, attract stinging insects, warns the United States Department of Agriculture.

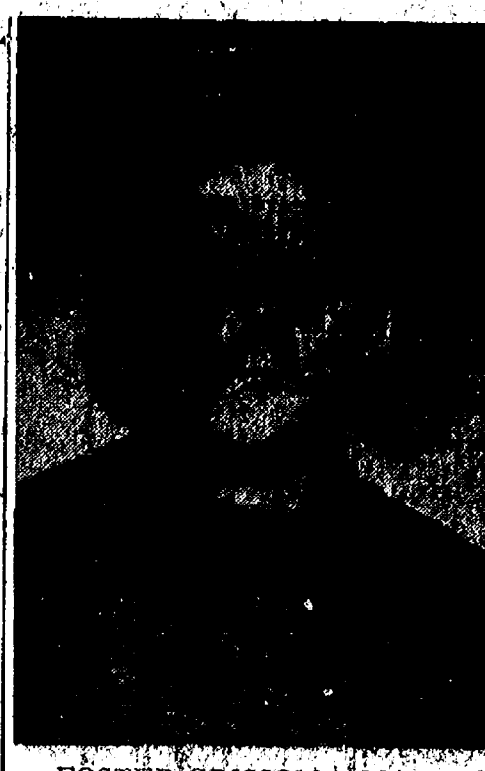
Persons who are highly allergic to insect stings and liable to get violent reactions to them, should avoid wearing bright jewelry and leather, which, along with certain odors, attract stinging insects, warns the United States Department of Agriculture.

Persons who are highly allergic to insect stings and liable to get violent reactions to them, should avoid wearing bright jewelry and leather, which, along with certain odors, attract stinging insects, warns the United States Department of Agriculture.

Persons who are highly allergic to insect stings and liable to get violent reactions to them, should avoid wearing bright jewelry and leather, which, along with certain odors, attract stinging insects, warns the United States Department of Agriculture.

Persons who are highly allergic to insect stings and liable to get violent reactions to them, should avoid wearing bright jewelry and leather, which, along with certain odors, attract stinging insects, warns the United States Department of Agriculture.

Persons who are highly allergic to insect stings and liable to get violent reactions to them, should avoid wearing bright jewelry and leather, which, along with certain odors, attract stinging insects, warns the United States Department of Agriculture.



FOSTER-GRISSOM: Mr. and Mrs. Dudley Foster of W. Middle St. have announced the engagement of their daughter, Molly Maureen, to Arthur D. Grissom. His parents are Mr. and Mrs. James Grissom of Syl van Rd. Both Molly and Arthur graduated from Chelsea High school. They plan a July wedding.

Woman's Club Hears Teachers

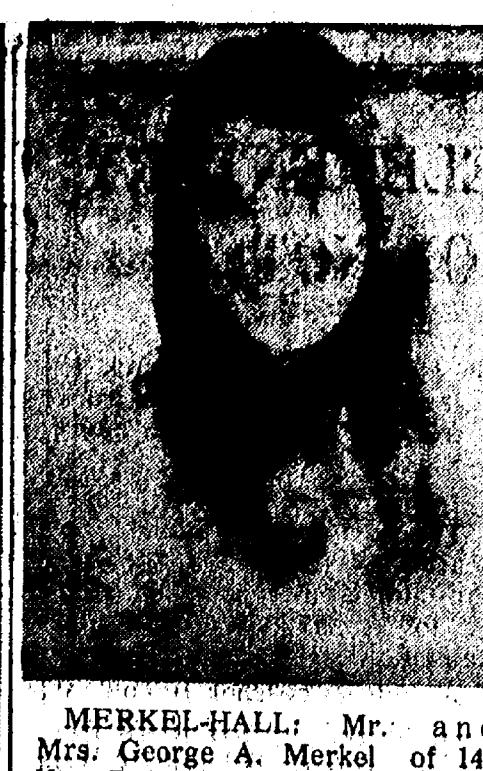
Woman's Club of Chelsea met Tuesday, Jan. 9, in the club room of McKune Library. The group consisted of 26 members and one guest, Beverly Yelsik.

Mrs. Eugene Duhamel, who had prepared the program, "Women in Education," introduced a panel which consisted of three Chelsea teachers, Mrs. Anthony Raduazo, North school, Beverly Yelsik, of Beach school, and Mrs. Charles Winans from the high school. They discussed motivation at three age levels.

Hostesses for the evening were Mrs. Dave Strieter and Mrs. Fred Wagner.

The board meeting Jan. 18, at 8 p.m., will be at the home of Mrs. Robert Allshouse, at 512 S. East St.

The next meeting will be held Jan. 23. It will deal with "Women in Sports."



MERKEL-HALL: Mr. and Mrs. George A. Merkel of 142 Van Buren have announced the engagement of their daughter, Ellen Marie Merkel, to John Raymond Hall. He is the son of Mrs. Russell Hall and the late Mr. Hall of Ypsilanti. The couple plans a wedding on Aug. 24. Miss Merkel is a graduate of Chelsea High school and Madonna College in Livonia. She is employed as a medical technologist at Pontiac General Hospital. Her fiancé was graduated from Roosevelt High in Ypsilanti and the University of Michigan where he was a member of Alpha Chi Sigma fraternity. He is presently at Osan Air Base in Korea, as a Sp-4 in the U. S. Army. Upon leaving the Army in August, John plans to enter graduate school at the university to study for a masters of science degree.

Subscribe today to The Standard!

Subscribe today to The Standard!

Subscribe today to The Standard!

Subscribe today to The Standard!

Subscribe today to The Standard!

Subscribe today to The Standard!

Subscribe today to The Standard!

Subscribe today to The Standard!

Subscribe today to The Standard!

Subscribe today to The Standard!

Subscribe today to The Standard!

Subscribe today to The Standard!

Subscribe today to The Standard!

Subscribe today to The Standard!

Subscribe today to The Standard!

Subscribe today to The Standard!

Subscribe today to The Standard!

Subscribe today to The Standard!

Subscribe today to The Standard!

Subscribe today to The Standard!

Subscribe today to The Standard!

Subscribe today to The Standard!

Subscribe today to The Standard!

Subscribe today to The Standard!

Subscribe today to The Standard!

Subscribe today to The Standard!

Subscribe today to The Standard!

Subscribe today to The Standard!

Subscribe today to The Standard!

Subscribe today to The Standard!

Subscribe today to The Standard!

Subscribe today to The Standard!

Subscribe today to The Standard!

Subscribe today to The Standard!

Subscribe today to The Standard!

Subscribe today to The Standard!

Subscribe today to The Standard!

Subscribe today to The Standard!

Subscribe today to The Standard!

Subscribe today to The Standard!

Subscribe today to The Standard!

Subscribe today to The Standard!

Subscribe today to The Standard!

Cub Scouts DEN 1, PACK 415

Cub Scouts of Den 1, Pack 415 met Thursday, Jan. 4, at the home of their den mother, Mrs. Alice Atkinson, at Cavanaugh Lake.

We attended a Christmas party, which Pack 415 was in charge of, for the new Cub Scout Pack at St. Louis school, on Dec. 3. On Dec. 10, our pack meeting was also a Christmas party. This party was at the K. of C. hall of Chelsea. Santa came and gave each child a stocking of candy. Then there were refreshments followed by games, which Mrs. Atkinson took charge of.

Everyone reported having a merry Christmas and a nice holiday vacation.

We welcomed a new Cub Scout to our den, Glenn Miller, who moved to our community from Detroit.

Mike Bice, scribe.

Fire Extinguishers Stolen from Buses

Ralph Brier, supervisor of buses, for the Chelsea School District, reported this week that two more fire extinguishers were stolen from buses parked in the high school parking lot over night. The loss, totaling \$52, was reported Tuesday morning.

VIVIANE WOODARD COSMETICS

475-8785

Dorothy Orthbrink, Director

NEW SAVIN COPIER

Now installed at
McKUNE MEMORIAL LIBRARY
Will copy any printed material
at
10¢ per sheet

Don't let the January Blaahs get you down!

Start a new interest by joining one of our needlework classes.

BEGINNING CROCHET CLASS

TIMES: Monday Afternoons, 1-3
Tuesday Evenings, 7:30-9:30
COST: \$8.50 for 8 weeks.

BEGINNING KNITTING CLASS

TIME: Monday Evenings, 7:30-9:30
COST: \$10 for 10 weeks.

BEGINNING NEEDLEPOINT CLASSES

TIME: Wednesday Evenings, 7:30-9:30
COST: \$15 for 6 weeks and all supplies for class.

ALL CLASSES START WEEK OF JAN. 22.
Please call 475-2512 to make reservations.

TAILFEATHER BOUTIQUE

A FUN PLACE TO SHOP
105 N. Main, Chelsea Phone 475-2512

FURNITURE SALE

FRI., JAN. 5 THRU SAT., JAN. 27

10% to 50% DISCOUNT ON ALL STOCK

(Except a Few Fair Trade Items)

LIVING ROOM - BEDROOM - DINING ROOM
LAMPS - ACCESSORIES - WALL DECOR

SAVE 10% ON ALL SPECIAL ORDERS

MERKEL

HOME FURNISHINGS

</

Lima Township Signs Fire Protection Contract

A new fire protection contract with the Village of Chelsea was one of several articles of business dispatched at the Lima Township Board meeting, Monday night. The contract was approved.

Edwin J. Coy, supervisor, Leila Bauer, clerk, Hilda Pierce, treasurer, and Allen Dines, the planning assistant, were present.

The group discussed the county's decision to have the townships finance Sheriff Department rural road patrols. A letter was read outlining the county decision and urging the township's co-operation. Action was postponed until the Association of Township's meeting Jan. 25.

The board has received \$5,008 from the revenue sharing program. It now must report back to the federal government on how the money is being used.

Dines reported on the current status of Huron Clinton Metropolitan Authority Mill Creek Park Funding Request.

The board also discussed the printing costs of the planning report drafted by Johnson, Johnson & Roy.

H & R Block Tax Office Open Again

For the second consecutive year, Edwin S. Lindberg, an H & R Block income tax consultant, has hung his shingle in Main St. The large black and white sign is a harbinger of the tax season.

Lindberg, who owns the Chelsea satellite of the large Ann Arbor firm, set up shop Monday, and will remain in the village through April 16. His lease includes two tax seasons, so he will be here again in '74 to help residents render unto Caesar what is Caesar's, and unto themselves what is theirs.

Although he is a staff of one here, Lindberg has access to the resources of the Ann Arbor office, if business gets heavy.


A resident of Ann Arbor, Lindberg speculates that, professionally, it is to his advantage being from out-of-town. He has observed that individuals are not always eager to discuss their tax problems with a neighbor.

They were both born in Greenup county, Ky., and came to Michigan after their marriage.

CHELSEA FINANCE CORP.
\$25 to \$1,500
For Any
Worthwhile Purpose

See or Call
FRANK HILL
at 475-8631

111 PARK STREET
CHELSEA, MICH.



FOR PROFIT

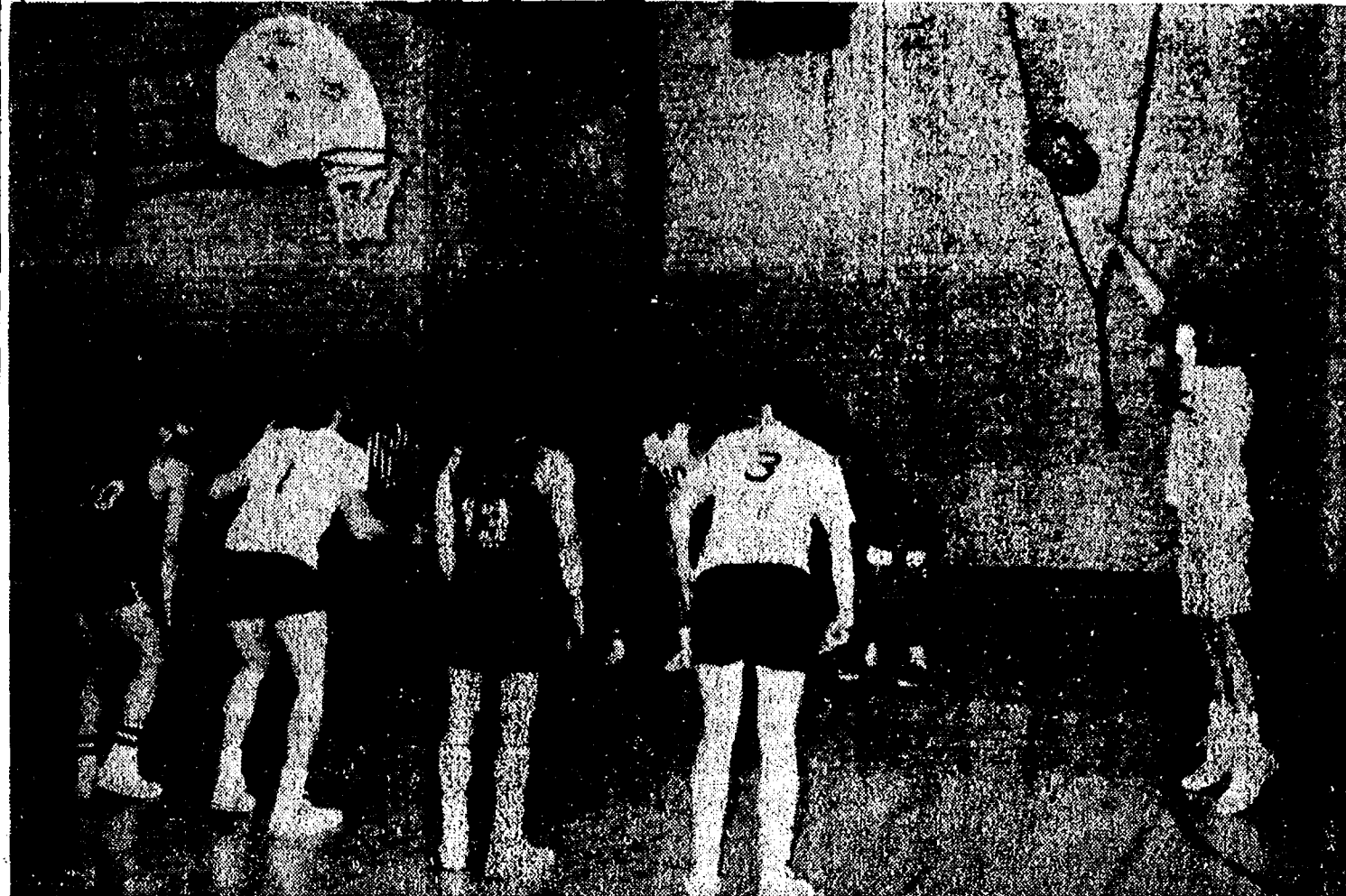
Profit-Producing Feeds For Livestock, Poultry

In our complete line of Fortified Feeds, you'll find the right feeds to keep livestock and poultry growing, gaining and producing.

Farmers' Supply Co.
Phone GR 5-5511



THE BALL IS UP, and the game between Lloyd Bridges Chevrolet and Chelsea Lumber has begun. The two teams are among six competing weekly at Chelsea Recreation Night, Tuesday, at Beach school. Here, a Lloyd Bridges player stretches above Jim Hartman who was playing for Chelsea Lumber. Waiting below, from left, are Howard McCalla (12), Jim Knott (3), two unidentified Lloyd Bridges team members, Bill Altenberndt, and Dave Clark.



ARCHIE BRADBURY exhibits all the cool concentration of a professional at the charity stripe as his teammates prepare to spring for a possible rebound should he miss scoring. Players, from left, are Dave Clark; Dick McCalla, Kim Flintoft, Jim Hartman and Jim Knott. Lloyd Bridges' end man is unidentified.

St. Louis School Notes

The boys of St. Louis school returned from their Christmas vacation Jan. 3. They were soon in the swing of things with a basketball scrimmage last Friday. Their opponents were boys from St. Patrick school in Brighton.

Sunday, Jan. 7, the boys and staff were invited to Dearborn Heights as guests of the Knights of Columbus. The ladies of the Altar Society prepared lunch. The boys were entertained with toys and games which were then donated to the school. Skipit the Clown was also there to delight the boys with his antics. Skipit, who was named Michigan Clown of the Year in 1971 and 1972.

The birthdays this week were Kern Stanley of Jackson, Bob Barbalas, and Mrs. Bill Robbins. Mrs. Robbins received a gift from the boys and the staff, and everyone enjoyed the ice cream and cake.

Two representatives of the telephone company from Livonia, Mr. Wolf and Dennis Brandt, visited the class conducted by Mrs. Ann Wilkinson, Monday. They brought with them a talking dog. With the help of telephones, a boy in another room can put words in the hound's mouth. The dog was given to the boys.

The boys will return to their families for the week-end.

Several hundred undergraduates in the University of Michigan Pilot Program live, study and attend classes together. Their dormitory members include graduate students who teach them.

Telephone Your Club News
To 475-1371.

Train Ticketed

Patrolman Lenard McDougall issued yet another ticket to a train blocking traffic through Chelsea for more than five minutes last week-end.

The train in question was straddled across Chelsea Saturday morning from 7:10 until 7:25. It obstructed traffic at Hayes, Main and McKinley Sts.

YES

WE ARE MAKING
LONG-TERM FARM
REAL ESTATE
LOANS

SEE US



P. O. Box 4006
Ph. 769-2411 3645 Jackson Rd.
Ann Arbor, Mich. 48103

Henry Block has 17 reasons why you should come to us for income tax help.

Reason 3. We are a year-round service. We do not disappear or go back to some other business after April 15.



H&R BLOCK
THE INCOME TAX PEOPLE

105 NORTH MAIN

Open 9 a.m.-6 p.m. Mon. thru Sat. Phone 475-2752
NO APPOINTMENT NECESSARY

Recreation Basketball Gets Underway

The first game of the season for Chelsea Recreation Basketball pitted Heydlauff's against the Chelsea Drug Store. After a very close game, Heydlauff's pulled it out with some clutch baskets.

High scorers for the winners were Dan Dorr with 20 points, P. Terpstra, 16, and J. Schaffner, 11. T. Fredericks and D. Lutchka led the drug store effort.

The second game saw even scoring by both teams until Lloyd Bridges Chevrolet went ahead to win, 51-44, leaving Chelsea Lumber behind. Top shooters for Bridges was Kim Flintoft with 12 points. Scorers for the Lumber Co. were Archie Bradbury and Dick McCalla with nine each.

The final game was a close one, again. This time Huron Valley National Bank defeated the Chelsea A & W. Big men for the winning team were Alexander, with 18 points, and Hayes and Peck, each with 13. Chelsea A & W high men were Miller with 16, and Shoop with 15. Davidson had 10.

Next week, Jan. 18, Chelsea Drug meets A & W at 6:30 p.m. Bridges Chevrolet will take on Huron Valley National Bank an hour later. Heydlauff's goes after Chelsea Lumber at 8:30 p.m.

Standings as of Jan. 10

	W	L
Lloyd Bridges Chevrolet	1	0
Huron Valley Nat. Bank	1	0
Chelsea Drug Store	0	1
Chelsea Lumber	0	1
Chelsea A & W	0	1

Scores for Jan. 9: Heydlauff's, 66; Drug Store 58; Bridges Chevrolet, 51; Chelsea Lumber 44; Huron Valley Bank 56, A & W 53.

One of the worst fires in the nation's history occurred Oct. 9, 1871, when a forest in Peshtigo, Wis., burned, resulting in 1,132 deaths.

NOW OPEN for Business WE REPAIR AND REPLACE:

- ★ STORE FRONTS
- ★ FURNITURE TOPS
- ★ SHOWER DOORS
- ★ THERMOPANES
- ★ AUTO GLASS - Including Windshields
- ★ MIRRORS
- ★ PATIO DOORS
- ★ TUB ENCLOSURES

Free Pick-up and delivery on auto work.

Storm Door & Window Reglazing & Screens

COMMERCIAL BUILDINGS OR RESIDENTIAL

PROMPT SERVICE CALL OR STOP IN REASONABLE PRICES

CHELSEA GLASS WORKS

WORKMANSHIP AND MATERIALS FULLY GUARANTEED.
PHONE (313) 475-8667 - OPEN 8 a.m. to 5 p.m.
140 WEST MIDDLE ST. CHELSEA, MICH.

Tell People You Read It in The Standard!

NOMINATION FORM

for
JAYCEE

DISTINGUISHED SERVICE AWARD

The Jaycee Distinguished Service Award is now open to any age, man or woman, who has given service to this community. We would greatly appreciate all nominations for this award. The nomination may be made by an individual or a group.

Please send nomination form to Chelsea Jaycees, P. O. Box 277, DSA Awards Chairman, Chelsea, Mich. 48118.

I Nominate _____ (name)

of _____ (address) for the Chelsea

Jaycee's Distinguished Service Award.

Signed _____

Phone No. _____

BIG JANUARY CLEARANCE SALE

1/2 OFF
Infants Pram Suits
Snow Suits (Boys' - Girls')
Boys' Jackets (to size 7)
Girls' Coats and Jackets
(To Size 14)
Children's Ski Pants and Snow Pants
ALL 1/2 OFF

Boys' and Girls'
Flannel Pajamas & Gowns
1/3 OFF

Girls' Winter Robes
1/2 OFF

Boys' and Girls'
WINTER SWEATERS
1/3 OFF

Ladies
WINTER DRESSES
1/2 OFF

Men's and Boys' (Size 8 up)
WINTER JACKETS
1/3 OFF

Lined Coveralls
(Carhartt)
Snowmobile Suits
Men's, Ladies' and Children's
ALL 1/3 OFF

Men's and Boys'
Winter Hats & Caps
1/2 OFF

Ladies' and Juniors'
Winter Coats & Jackets
1/2 OFF

Ladies' Winter Suits & Pant Suits
1/3 OFF

Ladies'
WINTER SPORTSWEAR
1/3 OFF

PALLAZO PANTS & LONG SKIRTS
1/3 OFF

Many, Many More Items Marked Down for January Clearance

THE WHITE SALE IS ON
Save on Sheets, Pillow Cases, and Towels

LADIES, MEN'S, CHILDREN'S

SHOES . . 1/3 to 1/2 and more off
ON THE BARGAIN FLOOR

DANCER'S

Chelsea's Friendly Department Store

GOT A PROBLEM?

- ★ Do you get a shock when you walk on your carpeting?
- ★ Fuel bills too high?
- ★ Does your throat feel dry and scratchy in the morning?
- ★ Or maybe your furniture is splitting or coming unglued . . .

SOLVE THESE PROBLEMS WITH A HUMIDIFIER

On Sale
As Low as **\$69⁹⁵**

HEYDLAUFF'S

113 North Main St., Chelsea

Phone 475-1221